



Brushed DC Motors – Servo Motors

Brushed DC Motors – Servo Motors

Inhaltsverzeichnis	Seite
ESA Brushed servo motor	4
ESA 2S	5
ESA 2L	6
ESA 3XS	7
ESA 3S	8
ESA 3SL	9
ESA 3M	10
ESA 3L	11
ESA 6S	12
ESA 6F	13
ESA 6M	14
ESA 6L	15
ESA 9S	16
ESA 9M	17
ESA 9L	18
PENTA Brushed electric motor	19
PENTA 1S	20
PENTA 1M	21
PENTA 1L	22
PENTA 4S	23
PENTA 4M	24
PENTA 4L	25
PENTA 5X	26
PENTA 5XS	27
PENTA 5S	28
PENTA 5SL	29
PENTA 5M	30
PENTA 5L	31
PENTA 5XA	32
PENTA 5XSA	33
PENTA 5SA	34
PENTA 5SLA	35
PENTA 5MA	36
PENTA 7SA	37

PENTA 7MA	38
PENTA 7LA	39
ROK DC brushed gear motor	40
ROK 311 S	41
ROK 311 M	42
ROK 311 L	43
ROK 315 X	44
ROK 315 XS	45
ROK 315 S	46
ROK 335 XS	47
ROK 335 S	48
ROK 335 SL	49
TC4 60	50
TC4 80	51
08**M5—M—	52
08**M5—M—0816N5M10-90-3.0	53
10**M5—M—	54
10**M5—M—1025N5M04-115-12.0	55
12**M7—M—	56
12**M7—M—1230N7M**-48-4.5	57
1238M7—M—	58
1238M7—M—1230N7M**-48-4.5	59
16**C5—M—	60
16**C5—M—1625N5C02-150-12.0	61
25**C9—M—	62
25**C9—M—2543N9C2B03-65-24.0	63

ESA Brushed servo motor

BRUSH DC ESA servo motors are based on consolidated DC technology and incorporate the latest advances in mechanical design. ESA servo motors are exceptionally long lasting and reliable and boast an excellent size/performance ratio. ESA servo motors guarantee a high overload capacity without speed loss as well as rapid response and accurate speed control in low speed and high torque applications.



<https://www.kocomotion.de/produkt/esa-brushed-servo-motor/>



Produkte:	Seite
ESA 2S	5
ESA 2L	6
ESA 3XS	7
ESA 3S	8
ESA 3SL	9
ESA 3M	10
ESA 3L	11
ESA 6S	12
ESA 6F	13
ESA 6M	14
ESA 6L	15
ESA 9S	16
ESA 9M	17
ESA 9L	18

ESA 2S

BRUSH DC ESA servo motors are based on consolidated DC technology and incorporate the latest advances in mechanical design. ESA servo motors are exceptionally long lasting and reliable and boast an excellent size/performance ratio. ESA servo motors guarantee a high overload capacity without speed loss as well as rapid response and accurate speed control in low speed and high torque applications.



<https://www.kocomotion.de/produkt/esa-2s/>



Specification	
Continuous Stall Torque	0.32 Nm
Motor Diameter	58 mm
Motor Length	136 mm

ESA 2L

BRUSH DC ESA servo motors are based on consolidated DC technology and incorporate the latest advances in mechanical design. ESA servo motors are exceptionally long lasting and reliable and boast an excellent size/performance ratio. ESA servo motors guarantee a high overload capacity without speed loss as well as rapid response and accurate speed control in low speed and high torque applications.



<https://www.kocomotion.de/produkt/esa-2l/>



Specification	
Continuous Stall Torque	0.47 Nm
Motor Diameter	58 mm
Motor Length	183.5 mm

ESA 3XS

BRUSH DC ESA servo motors are based on consolidated DC technology and incorporate the latest advances in mechanical design. ESA servo motors are exceptionally long lasting and reliable and boast an excellent size/performance ratio. ESA servo motors guarantee a high overload capacity without speed loss as well as rapid response and accurate speed control in low speed and high torque applications.



<https://www.kocomotion.de/produkt/esa-3xs/>



Specification	
Continuous Stall Torque	0.6 Nm
Motor Diameter	83.5 mm
Motor Length	177.5 mm

ESA 3S

BRUSH DC ESA servo motors are based on consolidated DC technology and incorporate the latest advances in mechanical design. ESA servo motors are exceptionally long lasting and reliable and boast an excellent size/performance ratio. ESA servo motors guarantee a high overload capacity without speed loss as well as rapid response and accurate speed control in low speed and high torque applications.



<https://www.kocomotion.de/produkt/esa-3s/>



Specification	
Continuous Stall Torque	0.93 Nm
Motor Diameter	83.5 mm
Motor Length	212.5 mm

ESA 3SL

BRUSH DC ESA servo motors are based on consolidated DC technology and incorporate the latest advances in mechanical design. ESA servo motors are exceptionally long lasting and reliable and boast an excellent size/performance ratio. ESA servo motors guarantee a high overload capacity without speed loss as well as rapid response and accurate speed control in low speed and high torque applications.



<https://www.kocomotion.de/produkt/esa-3sl/>



Specification	
Continuous Stall Torque	1.3 Nm
Motor Diameter	83.5 mm
Motor Length	229 mm

ESA 3M

BRUSH DC ESA servo motors are based on consolidated DC technology and incorporate the latest advances in mechanical design. ESA servo motors are exceptionally long lasting and reliable and boast an excellent size/performance ratio. ESA servo motors guarantee a high overload capacity without speed loss as well as rapid response and accurate speed control in low speed and high torque applications.



<https://www.kocomotion.de/produkt/esa-3m/>



Specification	
Continuous Stall Torque	1.6 Nm
Motor Diameter	83.5 mm
Motor Length	267.5 mm

ESA 3L

BRUSH DC ESA servo motors are based on consolidated DC technology and incorporate the latest advances in mechanical design. ESA servo motors are exceptionally long lasting and reliable and boast an excellent size/performance ratio. ESA servo motors guarantee a high overload capacity without speed loss as well as rapid response and accurate speed control in low speed and high torque applications.



<https://www.kocomotion.de/produkt/esa-3l/>



Specification	
Continuous Stall Torque	2.1 Nm
Motor Diameter	83.5 mm
Motor Length	322.5 mm

ESA 6S

BRUSH DC ESA servo motors are based on consolidated DC technology and incorporate the latest advances in mechanical design. ESA servo motors are exceptionally long lasting and reliable and boast an excellent size/performance ratio. ESA servo motors guarantee a high overload capacity without speed loss as well as rapid response and accurate speed control in low speed and high torque applications.



<https://www.kocomotion.de/produkt/esa-6s/>



Specification	
Continuous Stall Torque	2.65 Nm
Motor Diameter	116 mm
Motor Length	268 mm

ESA 6F

BRUSH DC ESA servo motors are based on consolidated DC technology and incorporate the latest advances in mechanical design. ESA servo motors are exceptionally long lasting and reliable and boast an excellent size/performance ratio. ESA servo motors guarantee a high overload capacity without speed loss as well as rapid response and accurate speed control in low speed and high torque applications.



<https://www.kocomotion.de/produkt/esa-6f/>



Specification	
Continuous Stall Torque	3.5 Nm
Motor Diameter	116 mm
Motor Length	268 mm

ESA 6M

BRUSH DC ESA servo motors are based on consolidated DC technology and incorporate the latest advances in mechanical design. ESA servo motors are exceptionally long lasting and reliable and boast an excellent size/performance ratio. ESA servo motors guarantee a high overload capacity without speed loss as well as rapid response and accurate speed control in low speed and high torque applications.



<https://www.kocomotion.de/produkt/esa-6m/>



Specification	
Continuous Stall Torque	5.5 Nm
Motor Diameter	116 mm
Motor Length	340 mm

ESA 6L

BRUSH DC ESA servo motors are based on consolidated DC technology and incorporate the latest advances in mechanical design. ESA servo motors are exceptionally long lasting and reliable and boast an excellent size/performance ratio. ESA servo motors guarantee a high overload capacity without speed loss as well as rapid response and accurate speed control in low speed and high torque applications.



<https://www.kocomotion.de/produkt/esa-6l/>



Specification	
Continuous Stall Torque	8 Nm
Motor Diameter	116 mm
Motor Length	312 mm

ESA 9S

BRUSH DC ESA servo motors are based on consolidated DC technology and incorporate the latest advances in mechanical design. ESA servo motors are exceptionally long lasting and reliable and boast an excellent size/performance ratio. ESA servo motors guarantee a high overload capacity without speed loss as well as rapid response and accurate speed control in low speed and high torque applications.



<https://www.kocomotion.de/produkt/esa-9s/>



Specification	
Continuous Stall Torque	6 Nm
Motor Diameter	153.5 mm
Motor Length	298 mm

ESA 9M

BRUSH DC ESA servo motors are based on consolidated DC technology and incorporate the latest advances in mechanical design. ESA servo motors are exceptionally long lasting and reliable and boast an excellent size/performance ratio. ESA servo motors guarantee a high overload capacity without speed loss as well as rapid response and accurate speed control in low speed and high torque applications.



<https://www.kocomotion.de/produkt/esa-9m/>



Specification	
Continuous Stall Torque	11 Nm
Motor Diameter	153.5 mm
Motor Length	363 mm

ESA 9L

BRUSH DC ESA servo motors are based on consolidated DC technology and incorporate the latest advances in mechanical design. ESA servo motors are exceptionally long lasting and reliable and boast an excellent size/performance ratio. ESA servo motors guarantee a high overload capacity without speed loss as well as rapid response and accurate speed control in low speed and high torque applications.



<https://www.kocomotion.de/produkt/esa-9l/>



Specification	
Continuous Stall Torque	15 Nm
Motor Diameter	153.5 mm
Motor Length	424 mm

PENTA Brushed electric motor

The brushed DC architecture of PENTA motors is one of the simplest, most robust and consolidated technologies in the field of motion control. These motors are available in various sizes and with a range of windings, and deliver high power and high breakaway torque. The top quality materials from which PENTA brushed DC motors are made guarantee excellent reliability and a long working life. PENTA brushed DC motors are perfect for use in constant speed applications.



<https://www.kocomotion.de/produkt/penta-brushed-electric-motor/>



Produkte:	Seite
PENTA 1S	20
PENTA 1M	21
PENTA 1L	22
PENTA 4S	23
PENTA 4M	24
PENTA 4L	25
PENTA 5X	26
PENTA 5XS	27
PENTA 5S	28
PENTA 5SL	29
PENTA 5M	30
PENTA 5L	31
PENTA 5XA	32
PENTA 5XSA	33
PENTA 5SA	34
PENTA 5SLA	35
PENTA 5MA	36
PENTA 7SA	37
PENTA 7MA	38
PENTA 7LA	39

PENTA 1S

The brushed DC architecture of PENTA motors is one of the simplest, most robust and consolidated technologies in the field of motion control. These motors are available in various sizes and with a range of windings, and deliver high power and high breakaway torque. The top quality materials from which PENTA brushed DC motors are made guarantee excellent reliability and a long working life. PENTA brushed DC motors are perfect for use in constant speed applications.



<https://www.kocomotion.de/produkt/penta-1s/>



Specification	
Power@2000 rpm	45 Watt
Power@3000 rpm	-
Diameter	57.8 mm
Length	109.5 mm

PENTA 1M

The brushed DC architecture of PENTA motors is one of the simplest, most robust and consolidated technologies in the field of motion control. These motors are available in various sizes and with a range of windings, and deliver high power and high breakaway torque. The top quality materials from which PENTA brushed DC motors are made guarantee excellent reliability and a long working life. PENTA brushed DC motors are perfect for use in constant speed applications.



<https://www.kocomotion.de/produkt/penta-1m/>



Specification	
Power@2000 rpm	70 Watt
Power@3000 rpm	-
Diameter	57.8 mm
Length	136 mm

PENTA 1L

The brushed DC architecture of PENTA motors is one of the simplest, most robust and consolidated technologies in the field of motion control. These motors are available in various sizes and with a range of windings, and deliver high power and high breakaway torque. The top quality materials from which PENTA brushed DC motors are made guarantee excellent reliability and a long working life. PENTA brushed DC motors are perfect for use in constant speed applications.



<https://www.kocomotion.de/produkt/penta-1l/>



Specification	
Power@2000 rpm	95 Watt
Power@3000 rpm	-
Diameter	57.8 mm
Length	183.5 mm

PENTA 4S

The brushed DC architecture of PENTA motors is one of the simplest, most robust and consolidated technologies in the field of motion control. These motors are available in various sizes and with a range of windings, and deliver high power and high breakaway torque. The top quality materials from which PENTA brushed DC motors are made guarantee excellent reliability and a long working life. PENTA brushed DC motors are perfect for use in constant speed applications.



<https://www.kocomotion.de/produkt/penta-4s/>



Specification	
Power@2000 rpm	300 Watt
Power@3000 rpm	200 Watt
Diameter	116 mm
Length	197.5 mm

PENTA 4M

The brushed DC architecture of PENTA motors is one of the simplest, most robust and consolidated technologies in the field of motion control. These motors are available in various sizes and with a range of windings, and deliver high power and high breakaway torque. The top quality materials from which PENTA brushed DC motors are made guarantee excellent reliability and a long working life. PENTA brushed DC motors are perfect for use in constant speed applications.



<https://www.kocomotion.de/produkt/penta-4m/>



Specification	
Power@2000 rpm	600 Watt
Power@3000 rpm	400 Watt
Diameter	116 mm
Length	227.5 mm

PENTA 4L

The brushed DC architecture of PENTA motors is one of the simplest, most robust and consolidated technologies in the field of motion control. These motors are available in various sizes and with a range of windings, and deliver high power and high breakaway torque. The top quality materials from which PENTA brushed DC motors are made guarantee excellent reliability and a long working life. PENTA brushed DC motors are perfect for use in constant speed applications.



<https://www.kocomotion.de/produkt/penta-4l/>



Specification	
Power@2000 rpm	900 Watt
Power@3000 rpm	600 Watt
Diameter	116 mm
Length	257.5 mm

PENTA 5X

The brushed DC architecture of PENTA motors is one of the simplest, most robust and consolidated technologies in the field of motion control. These motors are available in various sizes and with a range of windings, and deliver high power and high breakaway torque. The top quality materials from which PENTA brushed DC motors are made guarantee excellent reliability and a long working life. PENTA brushed DC motors are perfect for use in constant speed applications.



<https://www.kocomotion.de/produkt/penta-5x/>



Specification	
Power@2000 rpm	100 Watt
Power@3000 rpm	70 Watt
Diameter	83.5 mm
Length	144.5 mm

PENTA 5XS

The brushed DC architecture of PENTA motors is one of the simplest, most robust and consolidated technologies in the field of motion control. These motors are available in various sizes and with a range of windings, and deliver high power and high breakaway torque. The top quality materials from which PENTA brushed DC motors are made guarantee excellent reliability and a long working life. PENTA brushed DC motors are perfect for use in constant speed applications.



<https://www.kocomotion.de/produkt/penta-5xs/>



Specification	
Power@2000 rpm	150 Watt
Power@3000 rpm	100 Watt
Diameter	83.5 mm
Length	177.5 mm

PENTA 5S

The brushed DC architecture of PENTA motors is one of the simplest, most robust and consolidated technologies in the field of motion control. These motors are available in various sizes and with a range of windings, and deliver high power and high breakaway torque. The top quality materials from which PENTA brushed DC motors are made guarantee excellent reliability and a long working life. PENTA brushed DC motors are perfect for use in constant speed applications.



<https://www.kocomotion.de/produkt/penta-5s/>



Specification	
Power@2000 rpm	200 Watt
Power@3000 rpm	135 Watt
Diameter	83.5 mm
Length	212.5 mm

PENTA 5SL

The brushed DC architecture of PENTA motors is one of the simplest, most robust and consolidated technologies in the field of motion control. These motors are available in various sizes and with a range of windings, and deliver high power and high breakaway torque. The top quality materials from which PENTA brushed DC motors are made guarantee excellent reliability and a long working life. PENTA brushed DC motors are perfect for use in constant speed applications.



<https://www.kocomotion.de/produkt/penta-5sl/>



Specification	
Power@2000 rpm	300 Watt
Power@3000 rpm	200 Watt
Diameter	83.5 mm
Length	229 mm

PENTA 5M

The brushed DC architecture of PENTA motors is one of the simplest, most robust and consolidated technologies in the field of motion control. These motors are available in various sizes and with a range of windings, and deliver high power and high breakaway torque. The top quality materials from which PENTA brushed DC motors are made guarantee excellent reliability and a long working life. PENTA brushed DC motors are perfect for use in constant speed applications.



<https://www.kocomotion.de/produkt/penta-5m/>



Specification	
Power@2000 rpm	360 Watt
Power@3000 rpm	240 Watt
Diameter	83.5 mm
Length	267.5 mm

PENTA 5L

The brushed DC architecture of PENTA motors is one of the simplest, most robust and consolidated technologies in the field of motion control. These motors are available in various sizes and with a range of windings, and deliver high power and high breakaway torque. The top quality materials from which PENTA brushed DC motors are made guarantee excellent reliability and a long working life. PENTA brushed DC motors are perfect for use in constant speed applications.



<https://www.kocomotion.de/produkt/penta-5l/>



Specification	
Power@2000 rpm	500 Watt
Power@3000 rpm	335 Watt
Diameter	83.5 mm
Length	322.5 mm

PENTA 5XA

The brushed DC architecture of PENTA motors is one of the simplest, most robust and consolidated technologies in the field of motion control. These motors are available in various sizes and with a range of windings, and deliver high power and high breakaway torque. The top quality materials from which PENTA brushed DC motors are made guarantee excellent reliability and a long working life. PENTA brushed DC motors are perfect for use in constant speed applications.



<https://www.kocomotion.de/produkt/penta-5xa/>



Specification	
Power@2000 rpm	150 Watt
Power@3000 rpm	100 Watt
Diameter	107 mm
Length	189.5 mm

PENTA 5XSA

The brushed DC architecture of PENTA motors is one of the simplest, most robust and consolidated technologies in the field of motion control. These motors are available in various sizes and with a range of windings, and deliver high power and high breakaway torque. The top quality materials from which PENTA brushed DC motors are made guarantee excellent reliability and a long working life. PENTA brushed DC motors are perfect for use in constant speed applications.



<https://www.kocomotion.de/produkt/penta-5xsa/>



Specification	
Power@2000 rpm	235 Watt
Power@3000 rpm	155 Watt
Diameter	107 mm
Length	222.5 mm

PENTA 5SA

The brushed DC architecture of PENTA motors is one of the simplest, most robust and consolidated technologies in the field of motion control. These motors are available in various sizes and with a range of windings, and deliver high power and high breakaway torque. The top quality materials from which PENTA brushed DC motors are made guarantee excellent reliability and a long working life. PENTA brushed DC motors are perfect for use in constant speed applications.



<https://www.kocomotion.de/produkt/penta-5sa/>



Specification	
Power@2000 rpm	300 Watt
Power@3000 rpm	200 Watt
Diameter	107 mm
Length	257.5 mm

PENTA 5SLA

The brushed DC architecture of PENTA motors is one of the simplest, most robust and consolidated technologies in the field of motion control. These motors are available in various sizes and with a range of windings, and deliver high power and high breakaway torque. The top quality materials from which PENTA brushed DC motors are made guarantee excellent reliability and a long working life. PENTA brushed DC motors are perfect for use in constant speed applications.



<https://www.kocomotion.de/produkt/penta-5sla/>



Specification	
Power@2000 rpm	440 Watt
Power@3000 rpm	290 Watt
Diameter	107 mm
Length	274 mm

PENTA 5MA

The brushed DC architecture of PENTA motors is one of the simplest, most robust and consolidated technologies in the field of motion control. These motors are available in various sizes and with a range of windings, and deliver high power and high breakaway torque. The top quality materials from which PENTA brushed DC motors are made guarantee excellent reliability and a long working life. PENTA brushed DC motors are perfect for use in constant speed applications.



<https://www.kocomotion.de/produkt/penta-5ma/>



Specification	
Power@2000 rpm	565 Watt
Power@3000 rpm	375 Watt
Diameter	107 mm
Length	312.5 mm

PENTA 7SA

The brushed DC architecture of PENTA motors is one of the simplest, most robust and consolidated technologies in the field of motion control. These motors are available in various sizes and with a range of windings, and deliver high power and high breakaway torque. The top quality materials from which PENTA brushed DC motors are made guarantee excellent reliability and a long working life. PENTA brushed DC motors are perfect for use in constant speed applications.



<https://www.kocomotion.de/produkt/penta-7sa/>



Specification	
Power@2000 rpm	750 Watt
Power@3000 rpm	500 Watt
Diameter	116 mm
Length	318 mm

PENTA 7MA

The brushed DC architecture of PENTA motors is one of the simplest, most robust and consolidated technologies in the field of motion control. These motors are available in various sizes and with a range of windings, and deliver high power and high breakaway torque. The top quality materials from which PENTA brushed DC motors are made guarantee excellent reliability and a long working life. PENTA brushed DC motors are perfect for use in constant speed applications.



<https://www.kocomotion.de/produkt/penta-7ma/>



Specification	
Power@2000 rpm	1100 Watt
Power@3000 rpm	750 Watt
Diameter	116 mm
Length	390 mm

PENTA 7LA

The brushed DC architecture of PENTA motors is one of the simplest, most robust and consolidated technologies in the field of motion control. These motors are available in various sizes and with a range of windings, and deliver high power and high breakaway torque. The top quality materials from which PENTA brushed DC motors are made guarantee excellent reliability and a long working life. PENTA brushed DC motors are perfect for use in constant speed applications.



<https://www.kocomotion.de/produkt/penta-7la/>



Specification	
Power@2000 rpm	1500 Watt
Power@3000 rpm	1100 Watt
Diameter	116 mm
Length	462 mm

ROK DC brushed gear motor

This series of worm gearmotors is assembled to continuous and alternating current motors. Thanks to the direct coupling ROK series introduces objective performance advantages in comparison with a classic configuration motor-gearboxes.



<https://www.kocomotion.de/produkt/rok-dc-brushed-gear-motor/>



Produkte:	Seite
ROK 311 S	41
ROK 311 M	42
ROK 311 L	43
ROK 315 X	44
ROK 315 XS	45
ROK 315 S	46
ROK 335 XS	47
ROK 335 S	48
ROK 335 SL	49

ROK 311 S

This series of worm gearmotors is assembled to continuous and alternating current motors. Thanks to the direct coupling ROK series introduces objective performance advantages in comparison with a classic configuration motor-gearboxes.



<https://www.kocomotion.de/produkt/rok-311-s/>



Specification

Power	45 Watt
Input Speed	3000 rpm

ROK 311 M

This series of worm gearmotors is assembled to continuous and alternating current motors. Thanks to the direct coupling ROK series introduces objective performance advantages in comparison with a classic configuration motor-gearboxes.



<https://www.kocomotion.de/produkt/rok-311-m/>



Specification

Power	70 Watt
Input Speed	3000 rpm

ROK 311 L

This series of worm gearmotors is assembled to continuous and alternating current motors. Thanks to the direct coupling ROK series introduces objective performance advantages in comparison with a classic configuration motor-gearboxes.



<https://www.kocomotion.de/produkt/rok-311-l/>



Specification

Power	90 Watt
Input Speed	3000 rpm

ROK 315 X

This series of worm gearmotors is assembled to continuous and alternating current motors. Thanks to the direct coupling ROK series introduces objective performance advantages in comparison with a classic configuration motor-gearboxes.



<https://www.kocomotion.de/produkt/rok-315-x/>



Specification

Power	100 Watt
Input Speed	3000 rpm

ROK 315 XS

This series of worm gearmotors is assembled to continuous and alternating current motors. Thanks to the direct coupling ROK series introduces objective performance advantages in comparison with a classic configuration motor-gearboxes.



<https://www.kocomotion.de/produkt/rok-315-xs/>



Specification

Power	150 Watt
Input Speed	3000 rpm

ROK 315 S

This series of worm gearmotors is assembled to continuous and alternating current motors. Thanks to the direct coupling ROK series introduces objective performance advantages in comparison with a classic configuration motor-gearboxes.



<https://www.kocomotion.de/produkt/rok-315-s/>



Specification

Power	200 Watt
Input Speed	3000 rpm

ROK 335 XS

This series of worm gearmotors is assembled to continuous and alternating current motors. Thanks to the direct coupling ROK series introduces objective performance advantages in comparison with a classic configuration motor-gearboxes.



<https://www.kocomotion.de/produkt/rok-335-xs/>



Specification

Power	150 Watt
Input Speed	3000 rpm

ROK 335 S

This series of worm gearmotors is assembled to continuous and alternating current motors. Thanks to the direct coupling ROK series introduces objective performance advantages in comparison with a classic configuration motor-gearboxes.



<https://www.kocomotion.de/produkt/rok-335-s/>



Specification

Power	200 Watt
Input Speed	3000 rpm

ROK 335 SL

This series of worm gearmotors is assembled to continuous and alternating current motors. Thanks to the direct coupling ROK series introduces objective performance advantages in comparison with a classic configuration motor-gearboxes.



<https://www.kocomotion.de/produkt/rok-335-sl/>



Specification

Power	300 Watt
Input Speed	3000 rpm

TC4 60



<https://www.kocomotion.de/produkt/tc4-60/>

TC4 80



<https://www.kocomotion.de/produkt/tc4-80/>

08**M5—M—

8mm micro DC servo motor



<https://www.kocomotion.de/produkt/08m5-m/>

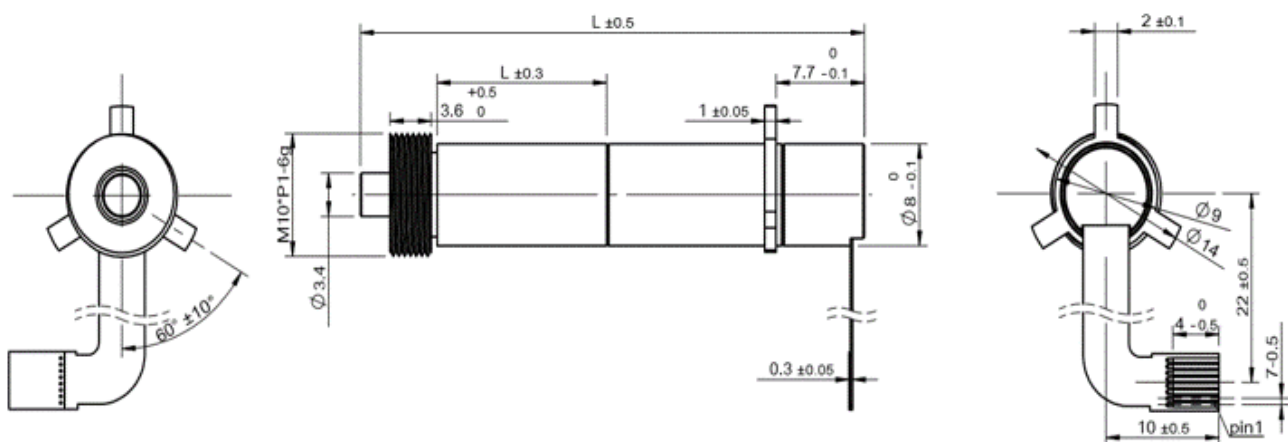


Produkte:

Seite

08**M5—M—0816N5M10-90-3.0

53



08**M5—M—0816N5M10-90-3.0



Precious Metal Commutation



<https://www.kocomotion.de/produkt/08m5-m-0816n5m10-90-3-0/>

Specification	
Voltage	3.0 V
Terminal resistance	14.2
No-load speed	9000 rpm
No-load current	8 mA
Stall torque	0.6 mNm
Stall current	210 mA
Nominal torque	0.3 mNm
Nominal speed	5490 rpm
Nominal current	88 mA
Back-EMF constant	0.32 mV/rpm
Torque constant	3.06 mNm/A

Optionen

- lead wires length
- shaft length
- special coils

Anwendungen

- medical equipment
- intelligent prostheses
- industrial equipment

10**M5—M—

10mm 12V micro DC servo motor



<https://www.kocomotion.de/produkt/10m5-m/>



Produkte:

Seite

10**M5—M—1025N5M04-115-12.0

55

10**M5—M—1025N5M04-115-12.0



Precious Metal Commutation



<https://www.kocomotion.de/produkt/10m5-m-1025n5m04-115-12-0/>

Specification	
Voltage	12.0 V
Terminal resistance	28.0
No-load speed	11500 rpm
No-load current	10 mA
Stall torque	4.2 mNm
Stall current	430 mA
Nominal torque	1.0 mNm
Nominal speed	8100 rpm
Nominal current	140 mA
Back-EMF constant	1.02 mV/rpm
Torque constant	9.73 mNm/A

Optionen

- lead wires length
- shaft length
- special coils

Anwendungen

- medical equipment
- intelligent prostheses
- industrial equipment

12**M7—M—

12mm 4.5V DC servo motor



<https://www.kocomotion.de/produkt/12m7-m/>

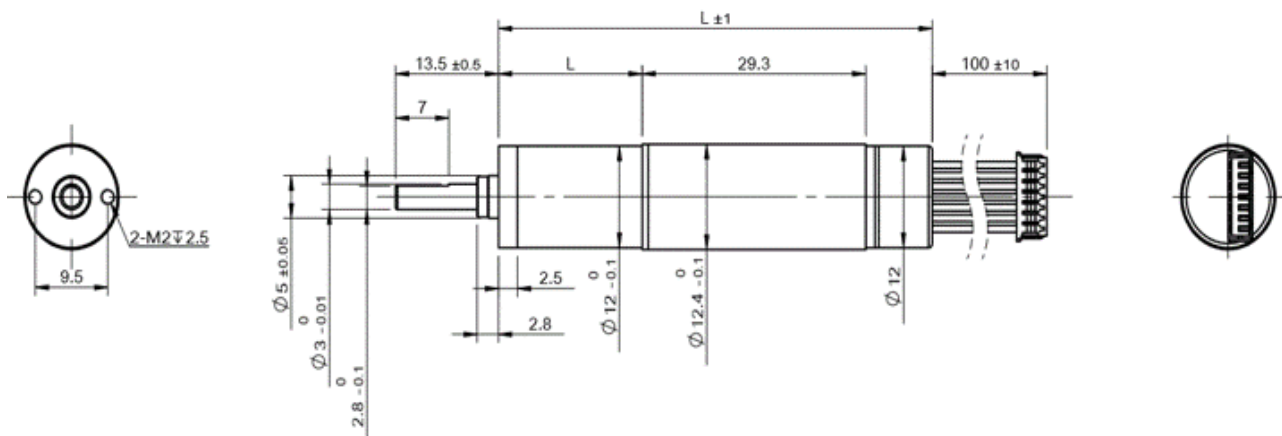


Produkte:

Seite

12**M7—M—1230N7M**48-4.5

57



12**M7—M—1230N7M**-48-4.5

Precious Metal Commutation



<https://www.kocomotion.de/produkt/12m7-m-1230n7m-48-4-5/>



Specification	
Voltage	4.5 V
Terminal resistance	8.5
No-load speed	4800 rpm
No-load current	15 mA
Stall torque	4.6 mNm
Stall current	530 mA
Nominal torque	2.0 mNm
Nominal speed	2760 rpm
Nominal current	235 mA
Back-EMF constant	0.91 mV/rpm
Torque constant	8.70 mNm/A

Optionen

- lead wires length
- shaft length
- special coils

Anwendungen

- medical equipment
- intelligent prostheses
- industrial equipment

1238M7—M—

12mm DC coreless servo motor



<https://www.kocomotion.de/produkt/1238m7-m/>

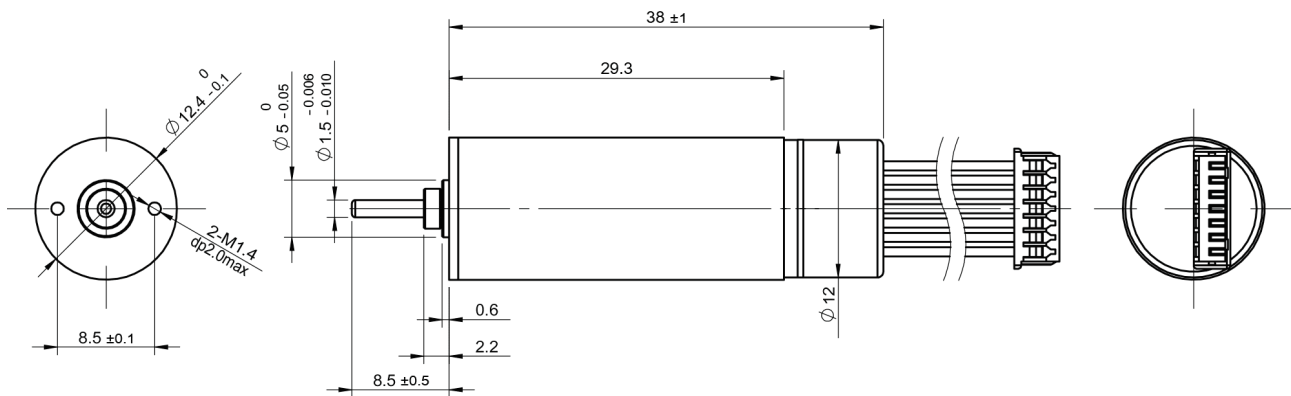


Produkte:

Seite

1238M7—M—1230N7M**-48-4.5

59



1238M7—M—1230N7M**—48-4.5



Precious Metal Commutation



<https://www.kocomotion.de/produkt/1238m7-m-1230n7m-48-4-5/>

Specification	
Voltage	4.5 V
Terminal resistance	8.5
No-load speed	4800 rpm
No-load current	15 mA
Stall torque	4.6 mNm
Stall current	530 mA
Nominal torque	2.0 mNm
Nominal speed	2760 rpm
Nominal current	235 mA
Back-EMF constant	0.91 mV/rpm
Torque constant	8.70 mNm/A

Optionen

- lead wires length
- shaft length
- special coils

Anwendungen

- medical equipment
- intelligent prostheses
- industrial equipment

16**C5—M—

16mm 12V DC coreless gearmotor with encoder



<https://www.kocomotion.de/produkt/16c5-m/>

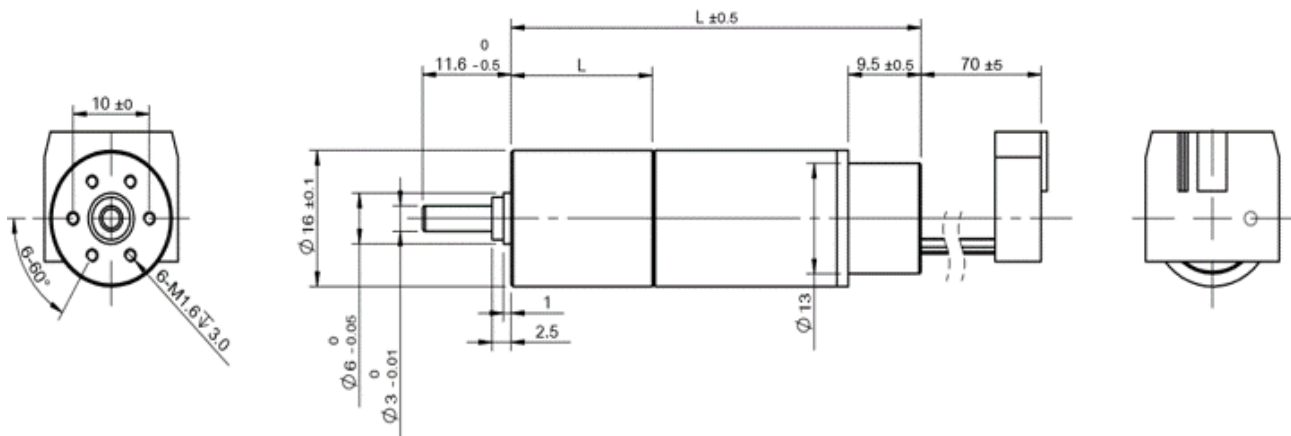


Produkte:

Seite

16**C5—M—1625N5C02-150-12.0

61



16**C5—M—1625N5C02-150-12.0



Graphite Brush



<https://www.kocomotion.de/produkt/16c5-m-1625n5c02-150-12-0/>

Specification	
Voltage	12.0 V
Terminal resistance	13.0
No-load speed	15000 rpm
No-load current	25 mA
Stall torque	6.8 mNm
Stall current	920 mA
Nominal torque	3.2 mNm
Nominal speed	7800 rpm
Nominal current	455 mA
Back-EMF constant	0.78 mV/rpm
Torque constant	7.43 mNm/A

Optionen

- lead wires length
- shaft length
- special coils

Anwendungen

- medical equipment
- intelligent prostheses
- industrial equipment

25**C9—M—

25mm DC 24V servo motor



<https://www.kocomotion.de/produkt/25c9-m/>

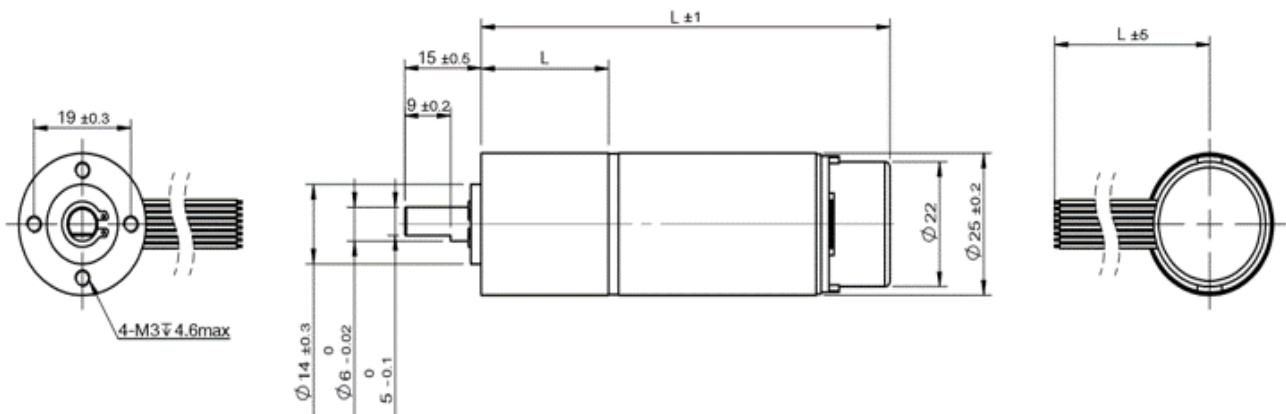


Produkte:

Seite

25**C9—M—2543N9C2B03-65-24.0

63



25**C9—M—2543N9C2B03-65-24.0



Graphite Brush



<https://www.kocomotion.de/produkt/25c9-m-2543n9c2b03-65-24-0/>

Specification	
Voltage	24.0 V
Terminal resistance	6.5
No-load speed	6500 rpm
No-load current	15 mA
Stall torque	129.6 mNm
Stall current	3690 mA
Nominal torque	37.6 mNm
Nominal speed	4570 rpm
Nominal current	1070 mA
Back-EMF constant	3.68 mV/rpm
Torque constant	35.12 mNm/A

Optionen

- lead wires length
- shaft length
- special coils

Anwendungen

- medical equipment
- intelligent prostheses
- industrial equipment



KOCO MOTION GmbH

Niedereschacher Straße 54
78083 Dauchingen
Deutschland

+49 7720 995858-0
info@kocomotion.de
www.kocomotion.de