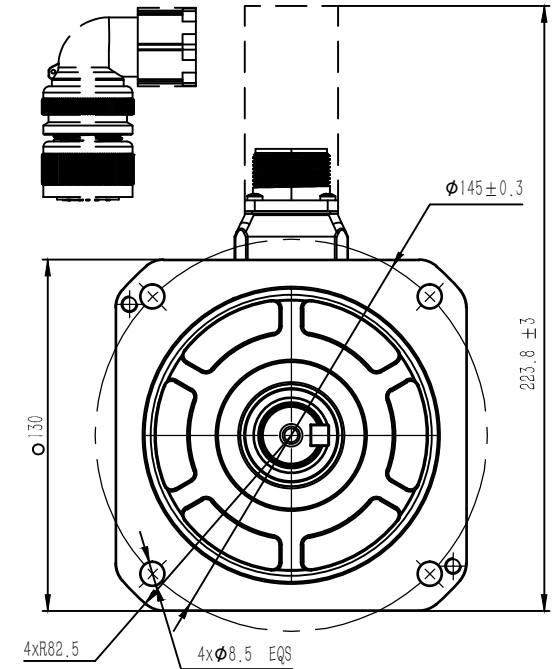
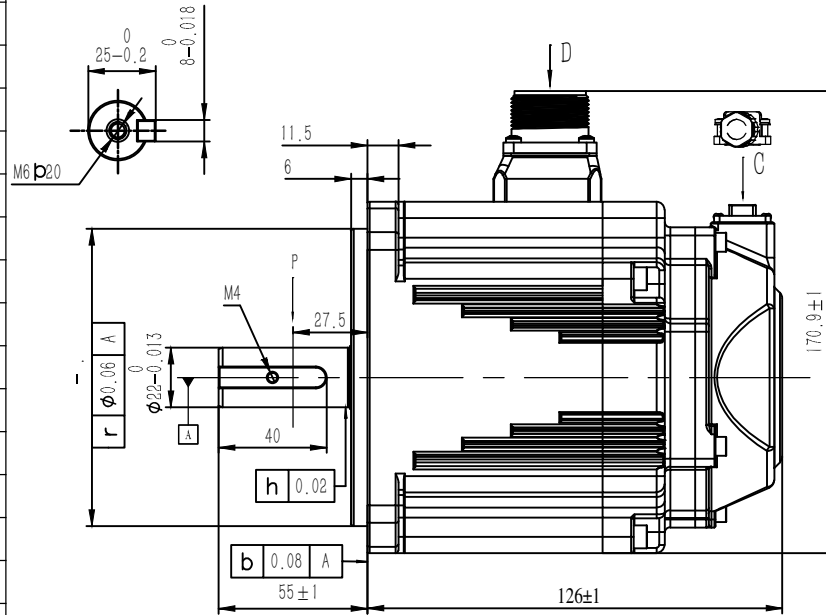
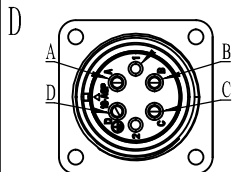
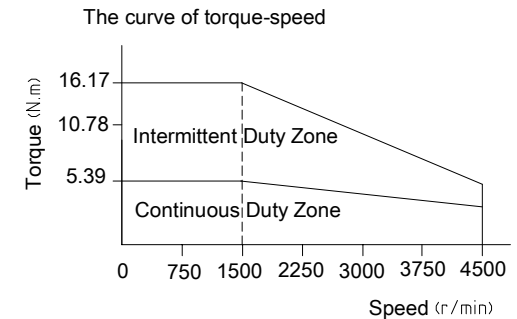


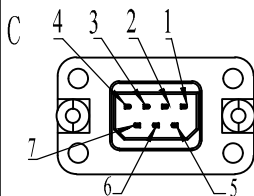
Rated Voltage (Vac)	220
Rated Power (w)	850
Rated Torque (N.m)	5.39
Peak Torque (N.m)	16.17
Rated Speed (rpm)	1500
Peak Speed (rpm)	4500
Rated Current (Amp)	6.8
Peak Current (Amp)	20.4
Torque Const (N.m/Amp)	0.79
Back EMF Const(V/Krpm)	47.9
Resistance(Ω)	0.87±10%
Inductance(mH)	8.3±20%
Inertia ($\text{kg}\cdot\text{m}^2\cdot 10^{-4}$)	12.5
Poles	10
Encoder type	23bit magnetic
IP rating	IP65
Mass (Kg)	5.5
Allowable radial load(N)	490
Allowable thrust load(N)	98



Power Cable (no brake)	CABLE-RZH***-135-TS
Encoder Cable	CABLE-BMH***-114-TS (For Inc) CABLE-BMAH***-124-TS (For Abs)



Assignment of power connector				
Pos	A	B	C	D
Signal	U	V	W	PE



Assignment of encoder connector							
Pos	1	2	3	4	5	6	7
Signal	PE	5V	0V	SD+	SD-	BAT+	BAT-

Leadshine Technology Co .Ltd

ELM1H-0850MD130F-H

130mm , high inertia , 850w servo motor
23bit multi-turns magnetic encoder,no brake