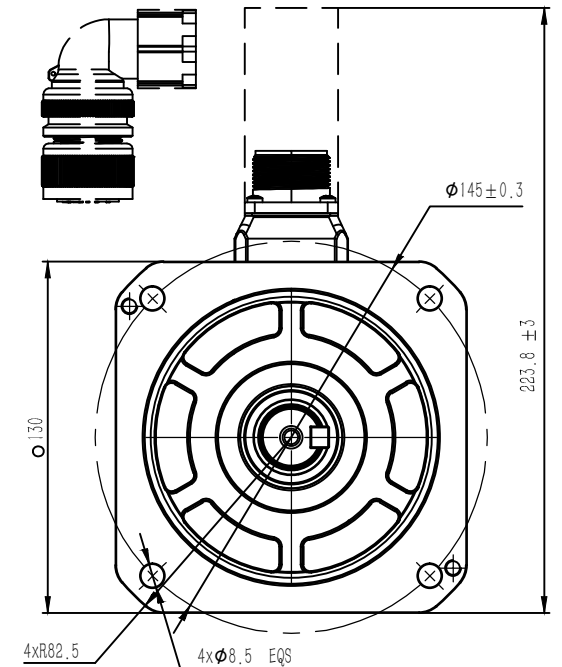
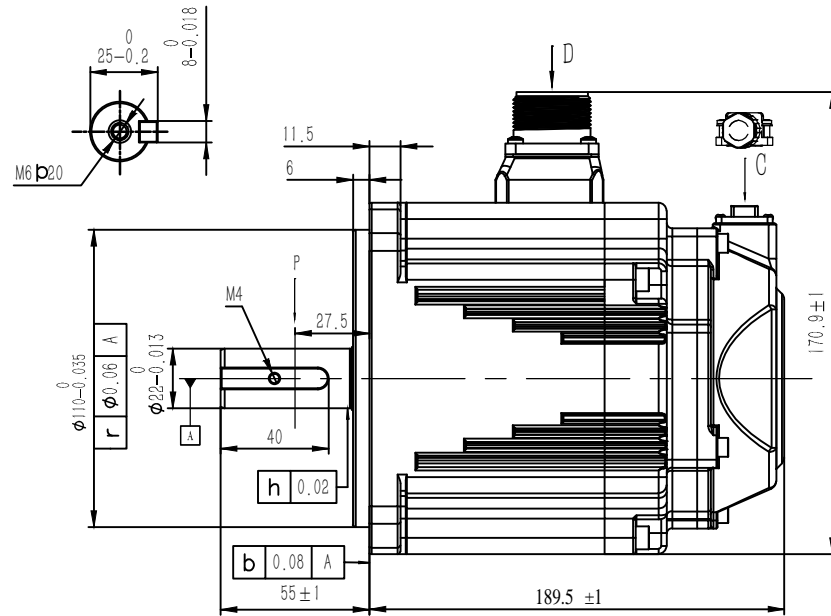
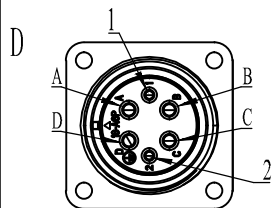
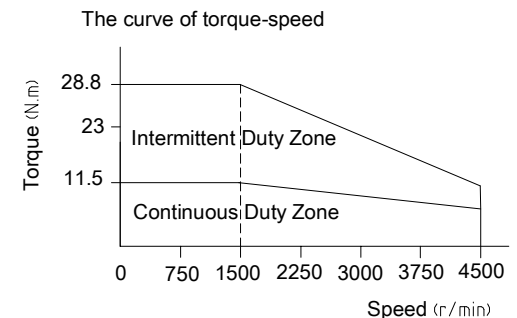


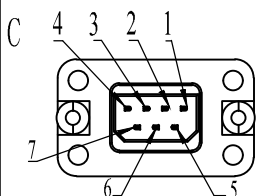
Rated Voltage (Vac)	220
Rated Power (w)	1800
Rated Torque (N.m)	11.5
Peak Torque (N.m)	28.8
Rated Speed (rpm)	1500
Peak Speed (rpm)	4500
Rated Current (Amp)	11.7
Peak Current (Amp)	29.3
Torque Const (N.m/Amp)	0.95
Back EMF Const(V/Krpm)	57.8
Resistance(Ω)	0.55±10%
Inductance(mH)	5.8±20%
Inertia (kg*m ² *10 ⁻⁴)	26.1
Poles	10
Encoder type	23bit magnetic
IP rating	IP65
Mass (Kg)	9.7
Allowable radial load(N)	980
Allowable thrust load(N)	392



Power Cable (no brake)	CABLE-RZH***-135-TS
Encoder Cable	CABLE-BMH***-114-TS (For Inc) CABLE-BMAH***-124-TS (For Abs)



Assignment of power connector with brake						
Pos	A	B	C	D	1	2
Signal	U	V	W	PE	0	24V



Assignment of encoder connector							
Pos	1	2	3	4	5	6	7
Signal	PE	5V	0V	SD+	SD-	BAT+	BAT-
Color	—	Red	Black	Blue	Yellow	Brown	White

Leadshine Technology Co .Ltd

ELM1H-1800MD130E-H

130mm , high inertia , 1800 w servo motor
23bit multi-turns magnetic encoder,with brake