

FLEXI PRO DRIVE TYPE



FPRO

Drive Name

006

Rating

2A

AC and Controller
input Power Supply

AP

Interface
Options

1

Analog
Input

XXX

Special
Specification

1

2

3

4

5

1

	Rating	
	120/240 VAC	
	Cont. [A rms]	Peak [A rms]
1D5	1.5	4.5
003	3	9
4D5	4,5	18
006	6	18
008	8	28
010	10	28
013	13	28
020	20	48
024	24	48

	Rating	
	400/480 VAC	
	Cont. [A rms]	Peak [A rms]
003	3	9
006	6	18
012	12	24
024	24	72
030	30	90

2

AC and Controller Input Power Supply	
2A	Input Single Phase 120L - L VAC +10% -15% 50/60Hz
	Input Single Phase 240L - L VAC +10% -15% 50/60Hz
	Input Three Phase 120 - 240L - L VAC +10% -15% 50/60Hz
4D	AC Input Power Supply:
	- Input Three Phase 400L - L VAC +10% -15% 50/60Hz
	- Input Three Phase 480L - L VAC +10% -15% 50/60Hz
	24VDC input for control board power supply

3

Interface Options

AF - Analog Voltage/Pulse Train Ref & CANopen® & USB & RS 232
EC - EtherCAT, USB, RS232
EB - EtherCAT, USB (two analog inputs only)

4

Analog Input

1 - One Analog input, 16 bit
2 - Two Analog inputs, 14 bit each

LPRO

E

65

C

Drive Name

Feedback

Model

Fielbus

1

2

3

LITE PRO DRIVE TYPE



1	Feedback	E = encoder
2	Model (output current) Arms	20 = 24/40 25 = 28/80 40 = 8/24 65 = 4/12
3	Fielbus	C = CANopen

The LITE PRO series is represented by the extremely compact 4-quadrant drives perfect matched to control the brushless servomotors TC Series. This series features as standard CanOpen interface and as an option a complete programmable version with integral Motion Process Unit, that allows stand alone operation or representation of stand alone networks.

FEATURES

- > 4 MODELS
- > STANDARD FEEDBACK TTL ENCODER AND HALL SENSOR
- > DIGITAL I/O: UP TO 8 DIGITAL INPUTS AND 1 OR 2 DIGITAL OUTPUTS CUSTOMIZABLE WITH SEVERAL BUILT-IN FUNCTIONS
- > CONTROL: STANDARD PI CONTROL LOOP
- > SERVO MODES: TORQUE, VELOCITY AND POSITION WITH S-CURVE PROFILE
- > INTERNAL SCRIPT
- > EXTREME COMPACT DESIGN

INTERFACE

- > ANALOG VELOCITY AND TORQUE COMMAND $\pm 10V$

CANopen



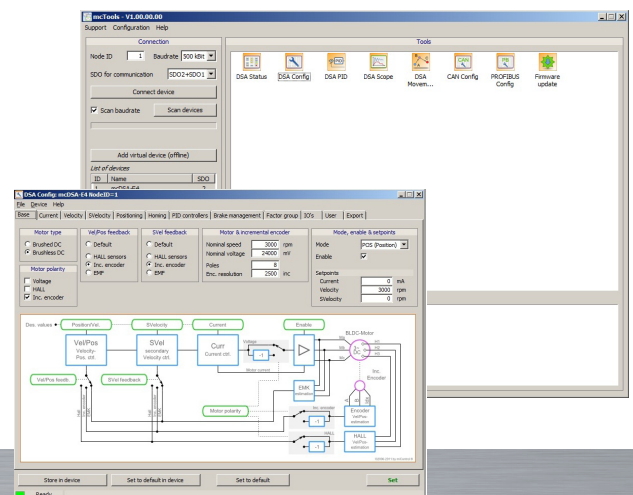
COMPACT AND PROFITABLE

PRODUCT DATA

FEATURE	UNITS	LPRO E65	LPRO E40	LPRO E20	LPRO E25
Input voltage	VDC	48			
Efficiency at rated power	%	>95			
Auxiliary supply voltage	VDC	9 ... 30			
Continuous current	Arms	4	8	24	28
Peak current	Arms	12	24	40	80
Ambient operating temperature	°C	0 to + 40°			
Maximum humidity	%	5÷85% not condensing			
Mounting method		Backplane	Wall mounting DIN Rail	Wall mounting	Wall mounting
Dimensions	LxWxH mm	52,5x41x11	110x22,5x77	111x100x30	111x100x30
Weight	gr	18	110	250	380
Digital IN		4	4	4	8
Digital OUT		2	1	1	2

LITE PRO USER INTERFACE

- > EASY AND INTUITIVE PC SOFTWARE ALLOWS A FAST
PARAMETERIZATION OF THE LITE PRO
- > SIMPLE SCOPE
- > SCRIPT EDITING



The FLEXI PRO series features a high-performance digital servo drive offering advanced functionality, high power density and seamless commissioning in a superior package. The innovative hardware design and software algorithms boast outstanding performance in one of the smallest footprints in the market.

FEATURES

- > **MULTIFEEDBACK**
- > **DIGITAL I/O: 11 DIGITAL INPUT AND 6 OUTPUT CUSTOMIZABLE WITH SEVERAL BUILT-IN FUNCTIONS AND INTERNAL SCRIPT**
- > **CONTROL: HD ADVANCED CONTROL LOOP WITH ADAPTIVE GAINS**
- > **SERVO MODES: TORQUE, VELOCITY AND POSITION WITH S-CURVE PROFILE**
- > **STO SIL 2**
- > **INTEGRATED SUPPORT FOR EXTERNAL BRAKING RESISTOR**
- > **COMPLETE MOTOR DATABASE**

BENEFITS

- > **INTELLIGENT AUTO-TUNING - MINIMIZES POSITION ERROR AND SETTLING TIME TO ALMOST ZERO**

Engineering experience and expertise has been implemented in a sophisticated Auto-Tuning function that performs optimal configurations for a difference-making performance

- > **NEW CURRENT LOOP DESIGN - ACHIEVES AN INDUSTRY-LEADING FREQUENCY RESPONSE OF UP TO 3.0 KHZ**

Rapid control loop sample rates and flexible filtering options provide a faster response, and ensure maximum machine accuracy and throughput

- > **INNOVATIVE ANTI-VIBRATION ALGORITHM - ELIMINATES MECHANICAL RESONANCE**

An active-non-linear algorithm eliminates vibration in highly flexible resonant systems. Commissioning is easy since only few gain parameters are required



INTERFACE

- > **USB WITH DAISY CHAIN CAPABILITY**
- > **PULSE & DIRECTION**
- > **ANALOG VELOCITY AND TORQUE COMMAND $\pm 10V$**

CANopen

EtherCAT

FLEXIBLE AND COMPREHENSIVE

PRODUCT DATA

FEATURE	UNITS	FPRO 1D5	FPRO 003	FPRO 4D5	FPRO 006	FPRO 008	FPRO 010	FPRO 013	FPRO 020	FPRO 024	FPRO 003	FPRO 006	FPRO 012	FPRO 024	FPRO 030	
Input Voltage	VAC	120/240 VAC Single Phase		240 VAC Single or Three Phase					120/240 VAC Three Phase		400/480 VAC Tree Phase					
Max Continuous power output	W	350	700	1000	1400	1800	2300	3000	4500	5500	1100	2200	4400	9000	11000	
Efficiency at rated Power	%	> 90														
Auxiliary Supply Voltage		120 .. 240 Vac										24 Vdc				
Continuous current rms	A rms	1,5	3	4,5	6	8	10	13	20	24	3	6	12	24	30	
Peak current	A rms	4,5	9	18	18	28	28	28	48	48	9	18	24	72	90	
Ambient Operating Temperature	°C	0 to + 45														
Maximum Humidity	%	90% not condensing														
Vibration		0.6G 10-60 Hz														
Shock		1 G														
Mounting Method		Wall Mount														
Dimensions	WxDxH mm	43x144x150		55x167x150		62x182x170			117x194x234		110x193x163		FPRO 012 117x194x234			
													FPRO 024 - FPRO 030 147x209x353			
Weight	Kg	0,7	0,75	0,97	0,97	1,15	1,15	1,15	3,2	3,2	2,1	2,1	3,2	10,5	10,5	

FLEXI PRO SUITE

> SIMPLIFIES SETUP, TESTING AND TUNING

User-friendly FLEXI SUITE software provides step-by-step guidance through the setup and tuning process. Setup and testing are intuitive thanks to auto-tuning functions and graphic representations of control loops

