

TETRA COMPACT

PRODUCT LINEUP

Servomotor Type	Rated Output Power	Rated Torque	Peak Torque	Rated Voltage	Rated Speed	Drive Type
	[W]	[Nm]	[Nm]	[Vdc]	[rpm]	
TC 40 0,16 00	60	0,19	0,48	48	3000	LITE PRO E 65
TC 40 0,16 32	60	0,19	0,48	24	3000	LITE PRO E 65
TC 40 0,32 00	100	0,32	0,96	48	3000	LITE PRO E 40
TC 40 0,32 32	100	0,32	0,96	24	3000	LITE PRO E 40
TC 60 0,65 00	200	0,64	1,95	48	3000	LITE PRO E 20
TC 60 0,65 01	200	0,64	1,95	48	3000	LITE PRO E 40
TC 60 0,65 32	200	0,64	1,95	24	3000	LITE PRO E 20
TC 60 1,3 01	370	1,18	3,9	48	3000	LITE PRO E 20
TC 60 1,3 32	280	0,87	3,9	24	3000	LITE PRO E 25
TC 80 1,5 01	480	1,53	4,5	48	3000	LITE PRO E 20
TC 80 1,5 03	480	1,53	4,5	48	3000	LITE PRO E 20
TC 80 2,8 02	480	1,54	8,4	48	3000	LITE PRO E 25

LITE PRO DRIVE TYPE

LPRO E 65 C

Drive Name

Feedback

Model

Fielbus

1

2

3



1

Feedback

E = encoder

2

Model (output current) Arms

20 = 24/40
25 = 28/80
40 = 8/24
65 = 4/12

3

Fielbus

C = CANopen

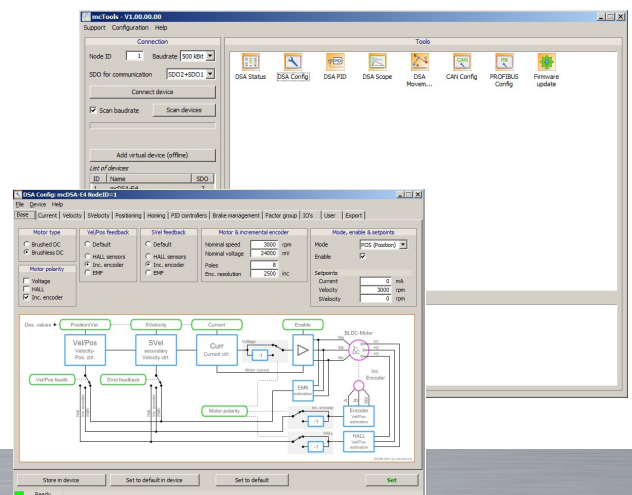
COMPACT AND PROFITABLE

PRODUCT DATA

FEATURE	UNITS	LPRO E65	LPRO E40	LPRO E20	LPRO E25
Input voltage	VDC	48			
Efficiency at rated power	%	>95			
Auxiliary supply voltage	VDC	9 ... 30			
Continuous current	Arms	4	8	24	28
Peak current	Arms	12	24	40	80
Ambient operating temperature	°C	0 to + 40°			
Maximum humidity	%	5÷85% not condensing			
Mounting method		Backplane	Wall mounting DIN Rail	Wall mounting	Wall mounting
Dimensions	LxWxH mm	52,5x41x11	110x22,5x77	111x100x30	111x100x30
Weight	gr	18	110	250	380
Digital IN		4	4	4	8
Digital OUT		2	1	1	2

LITE PRO USER INTERFACE

- > EASY AND INTUITIVE PC SOFTWARE ALLOWS A FAST PARAMETERIZATION OF THE LITE PRO
- > SIMPLE SCOPE
- > SCRIPT EDITING



SEE IT BEFORE IT HAPPENS

**MOTOR
POWER**
COMPANY