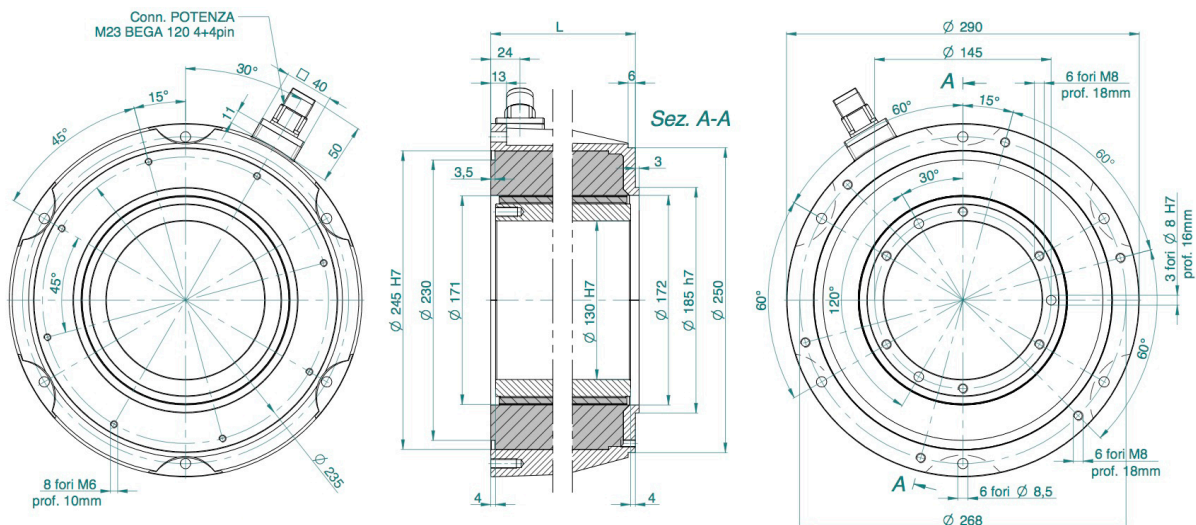


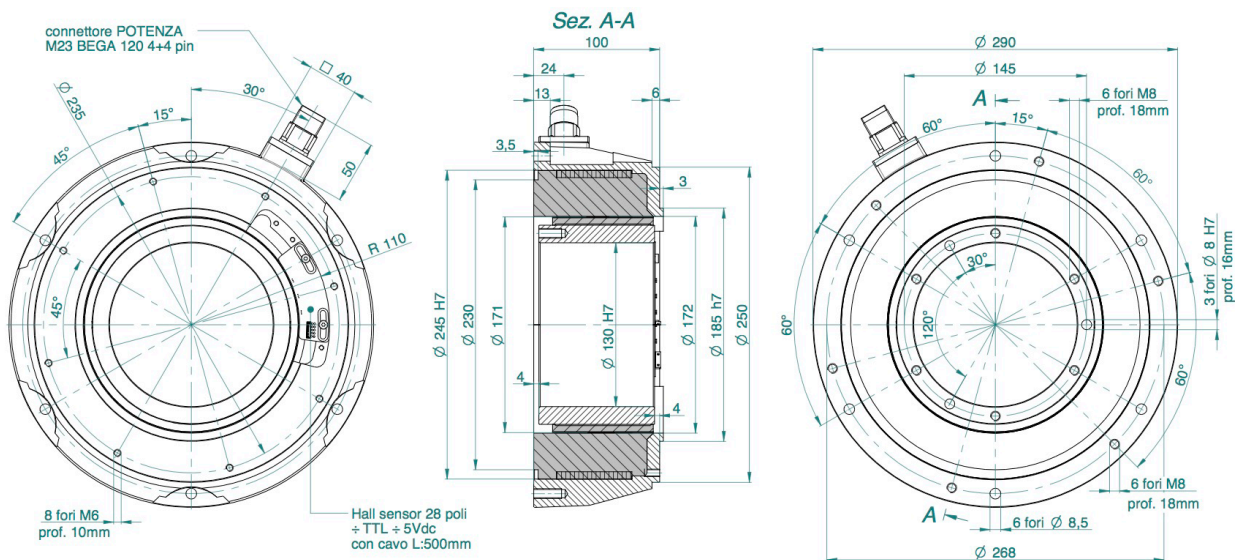
SKA DDR 245 DIMENSIONS AND CONFIGURATIONS

SKA DDR 245 FRAMELESS reference drawing 202



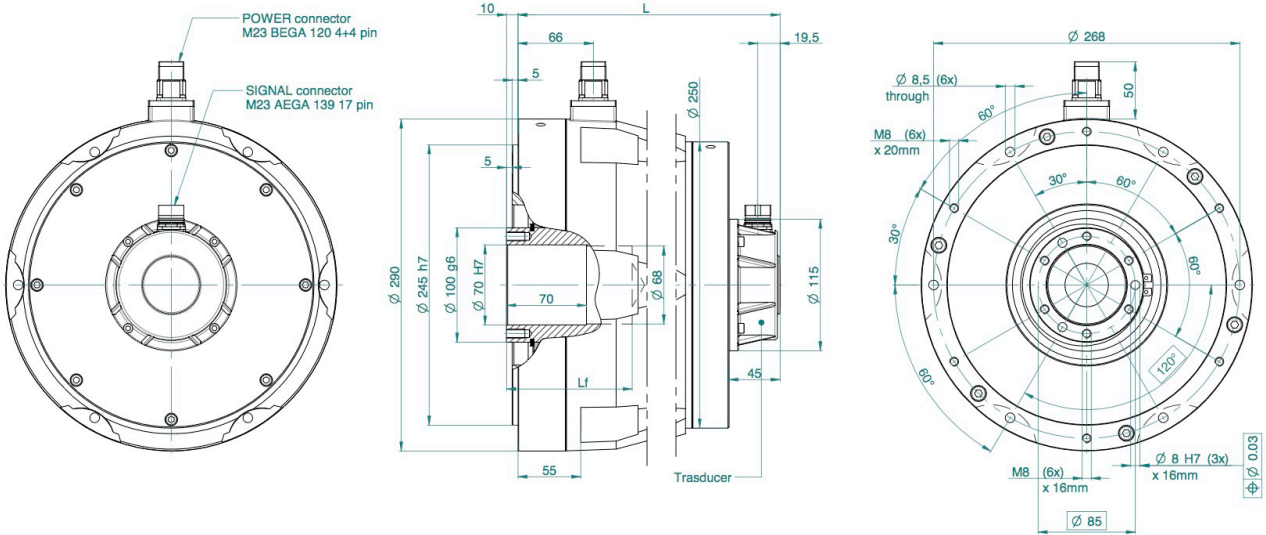
MOTOR TYPE	L (mm)
SKA DDR 245.30	70
SKA DDR 245.60	100
SKA DDR 245.90	130
SKA DDR 245.120	160

SKA DDR 245 60 FRAMELESS AND HALL SENSORS reference drawing 203



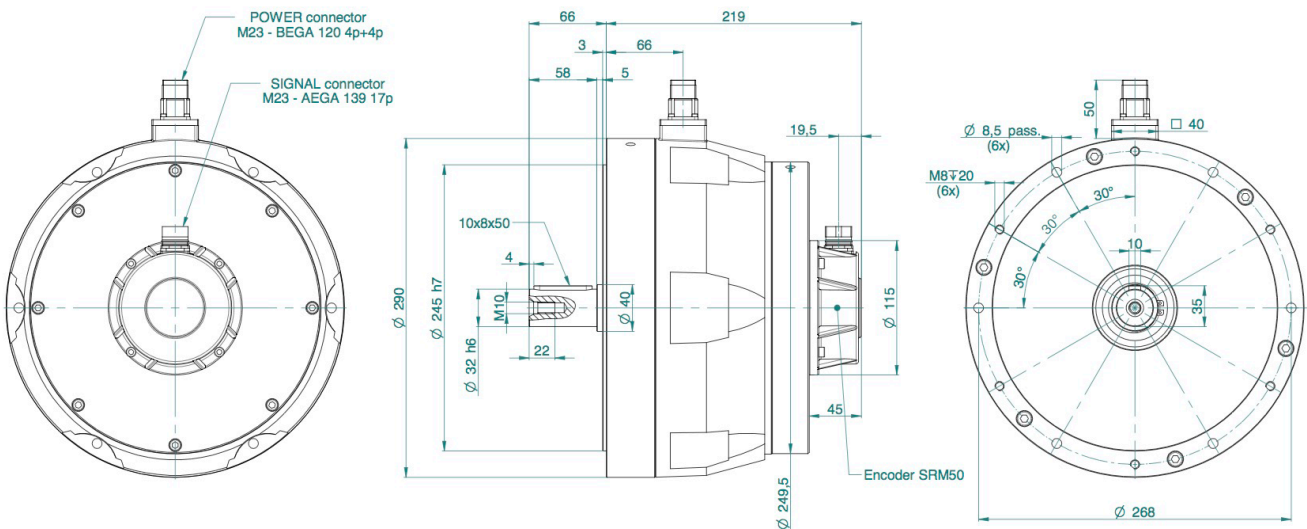
SKA DDR 245 DIMENSIONS AND CONFIGURATIONS

SKA DDR 245 POWER PACK HOLLOW SHAFT reference drawing 204



MOTOR TYPE	L (mm)	Lf (mm)
SKA DDR 245.30	189	80
SKA DDR 245.60	219	110
SKA DDR 245.90	249	140
SKA DDR 245.120	279	170

SKA DDR 245 60 POWER PACK MALE SHAFT reference drawing 205

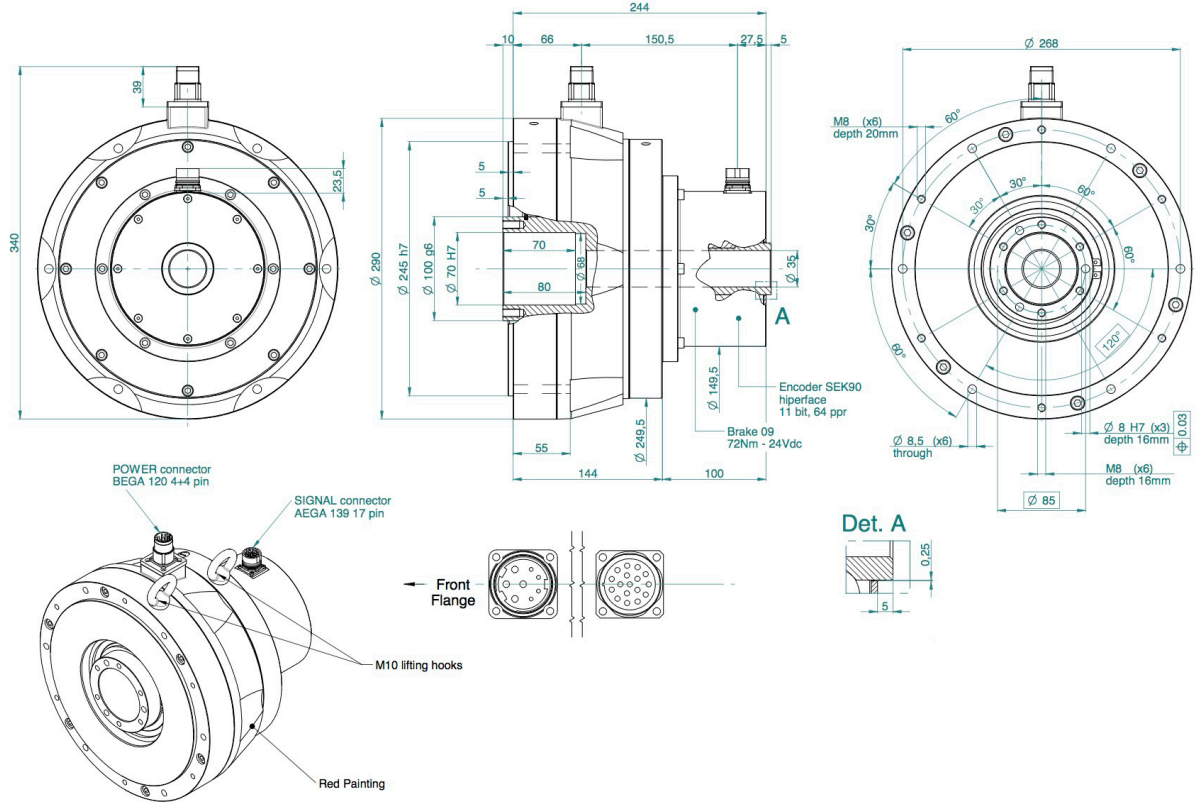


SEE IT BEFORE IT HAPPENS

**MOTOR
POWER**
COMPANY

SKA DDR 245 DIMENSIONS AND CONFIGURATIONS

SKA DDR 245 30 HOLLOW THROUGH SHAFT AND BRAKE reference drawing 206



SKA DDR 245 120 POWER PACK HOLLOW SHAFT AND BRAKE reference drawing 207

