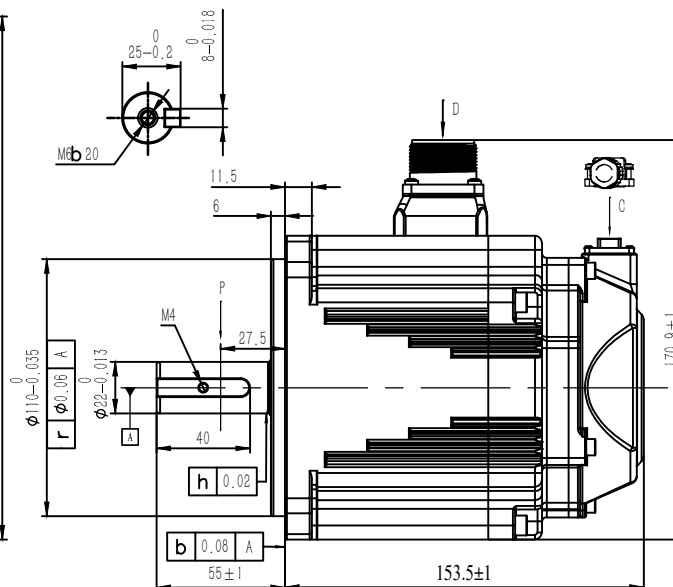
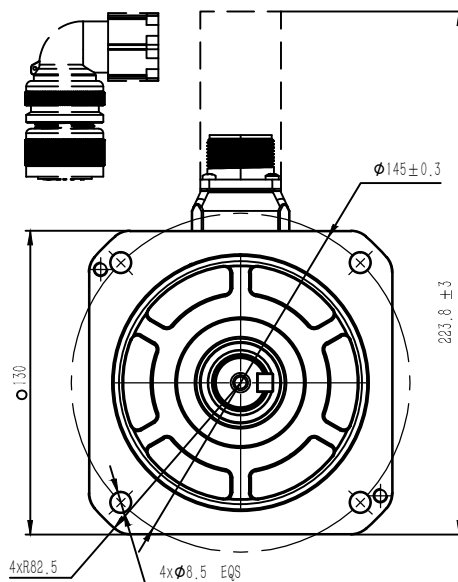
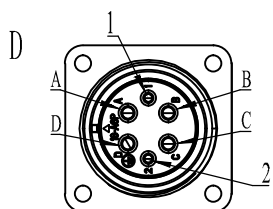
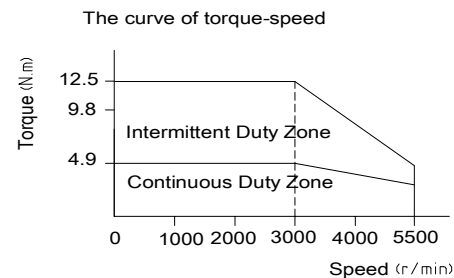


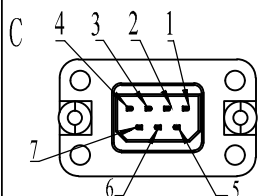
Rated Voltage (Vac)	<b>220</b>
Rated Power (w)	<b>1500</b>
Rated Torque (N.m)	<b>4.9</b>
Peak Torque (N.m)	<b>12.5</b>
Rated Speed (rpm)	<b>3000</b>
Peak Speed (rpm)	<b>5500</b>
Rated Current (Amp)	<b>6.8</b>
Peak Current (Amp)	<b>17.1</b>
Torque Const (N.m/Amp)	<b>0.72</b>
Inertia (kg*m <sup>2</sup> *10 <sup>-4</sup> )	<b>14.8</b>
Poles	<b>10</b>
Encoder type	<b>23bit magnetic</b>
IP rating	<b>IP65</b>
Mass (Kg)	<b>7.0</b>



Power Cable (with brake)	CABLE-RZSH***-135-TS
Encoder Cable	CABLE-BMH***-114-TS (For Inc ) CABLE-BMAH***-124-TS (For Abs )



Assignment of power connector with brake						
<b>Pos</b>	A	B	C	D	1	2
<b>Signal</b>	U	V	W	PE	0	24V



Assignment of encoder connector							
<b>Pos</b>	1	2	3	4	5	6	7
<b>Signal</b>	PE	5V	0V	SD+	SD-	BAT+	BAT-

Leadshine Technology Co .Ltd

**ELM1M-1500MA130E-H**

130mm, medium inertia, 1500w, brake  
23bit multi-turns magnetic encoder