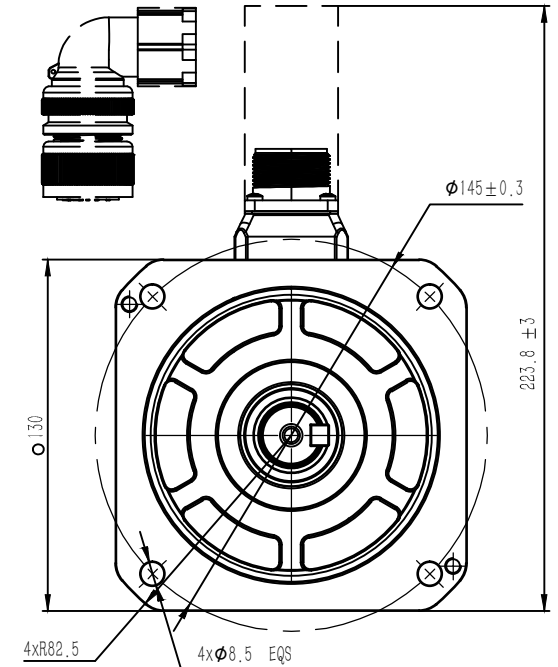
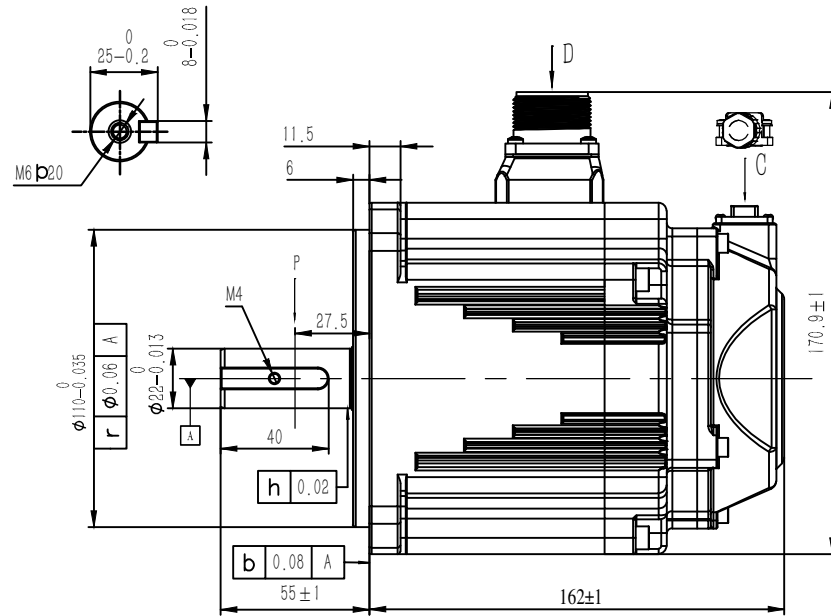
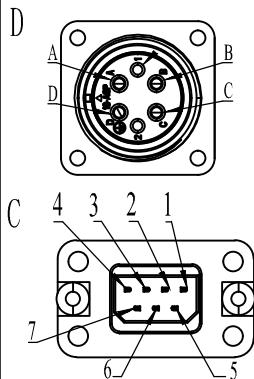
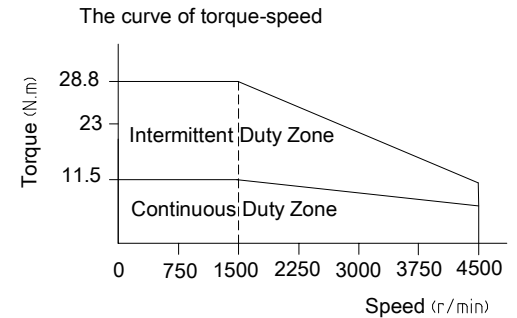


Rated Voltage (Vac)	<b>220</b>
Rated Power (w)	<b>1800</b>
Rated Torque (N.m)	<b>11.5</b>
Peak Torque (N.m)	<b>28.8</b>
Rated Speed (rpm)	<b>1500</b>
Peak Speed (rpm)	<b>4500</b>
Rated Current (Amp)	<b>11.2</b>
Peak Current (Amp)	<b>30.5</b>
Torque Const (N.m/Amp)	<b>0.95</b>
Back EMF Const(V/Krpm)	<b>57.8</b>
Resistance( $\Omega$ )	<b>0.55<math>\pm</math>10%</b>
Inductance(mH)	<b>5.8<math>\pm</math>20%</b>
Inertia ( $\text{kg}\cdot\text{m}^2\cdot 10^{-4}$ )	<b>23.8</b>
Poles	<b>10</b>
Encoder type	<b>23bit magnetic</b>
IP rating	<b>IP65</b>
Mass (Kg)	<b>8.3</b>
Allowable radial load(N)	<b>980</b>
Allowable thrust load(N)	<b>392</b>



Power Cable (no brake)	CABLE-RZH***-135-TS
Encoder Cable	CABLE-BMH***-114-TS (For Inc) CABLE-BMAH***-124-TS (For Abs)



Assignment of power connector				
Pos	A	B	C	D
Signal	U	V	W	PE
Color	Blue	Black	Red	Yellow/green

Assignment of encoder connector							
Pos	1	2	3	4	5	6	7
Signal	PE	5V	0V	SD+	SD-	BAT+	BAT-
Color	—	Red	Black	Blue	Yellow	Brown	White

Leadshine Technology Co .Ltd

**ELM1H-1800MD130F-H**

130mm , high inertia , 1800w servo motor  
23bit multi-turns magnetic encoder,no brake