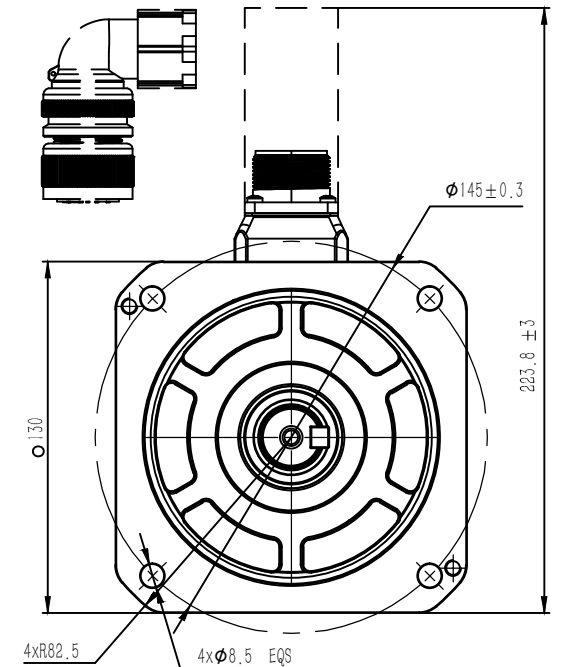
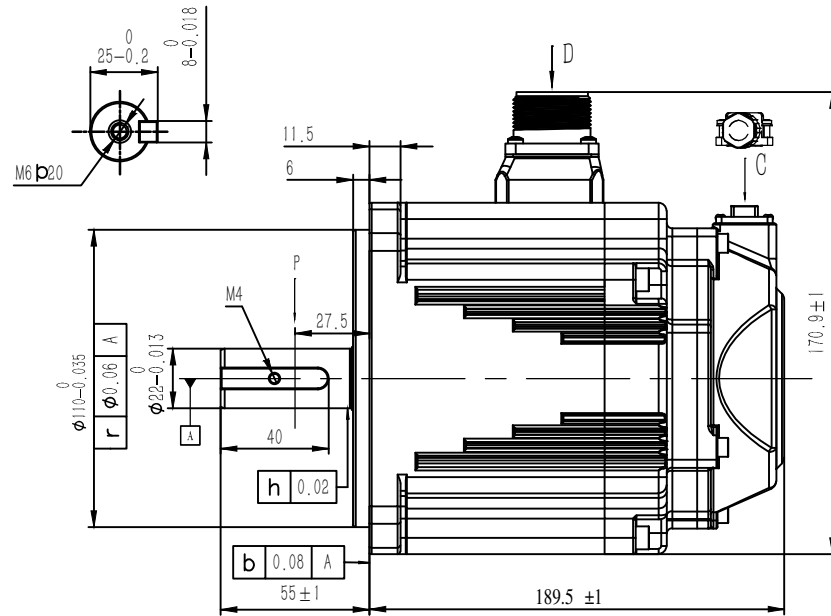
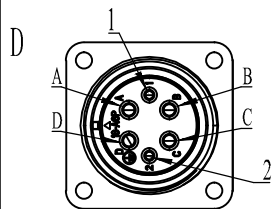
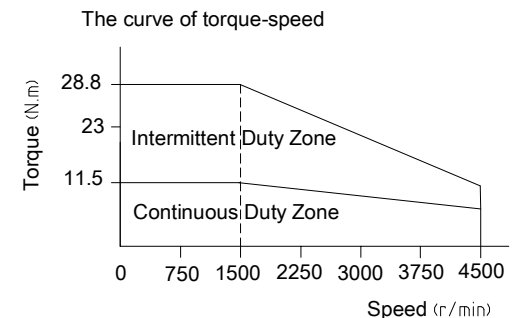


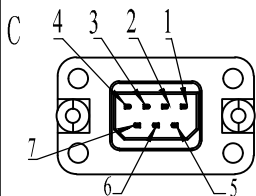
Rated Voltage (Vac)	<b>220</b>
Rated Power (w)	<b>1800</b>
Rated Torque (N.m)	<b>11.5</b>
Peak Torque (N.m)	<b>28.8</b>
Rated Speed (rpm)	<b>1500</b>
Peak Speed (rpm)	<b>4500</b>
Rated Current (Amp)	<b>11.2</b>
Peak Current (Amp)	<b>30.5</b>
Torque Const (N.m/Amp)	<b>0.95</b>
Back EMF Const(V/Krpm)	<b>57.8</b>
Resistance(Ω)	<b>0.55±10%</b>
Inductance(mH)	<b>5.8±20%</b>
Inertia (kg*m <sup>2</sup> *10 <sup>-4</sup> )	<b>26.1</b>
Poles	<b>10</b>
Encoder type	<b>23bit magnetic</b>
IP rating	<b>IP65</b>
Mass (Kg)	<b>9.7</b>
Allowable radial load(N)	<b>980</b>
Allowable thrust load(N)	<b>392</b>



Power Cable (no brake)	CABLE-RZH***-135-TS
Encoder Cable	CABLE-BMH***-114-TS (For Inc ) CABLE-BMAH***-124-TS (For Abs )



Assignment of power connector with brake						
<b>Pos</b>	A	B	C	D	1	2
<b>Signal</b>	U	V	W	PE	0	24V



Assignment of encoder connector							
<b>Pos</b>	1	2	3	4	5	6	7
<b>Signal</b>	PE	5V	0V	SD+	SD-	BAT+	BAT-
<b>Color</b>	—	Red	Black	Blue	Yellow	Brown	White

Leadshine Technology Co .Ltd

**ELM1H-1800MD130E-H**

130mm , high inertia , 1800 w servo motor  
23bit multi-turns magnetic encoder,with brake