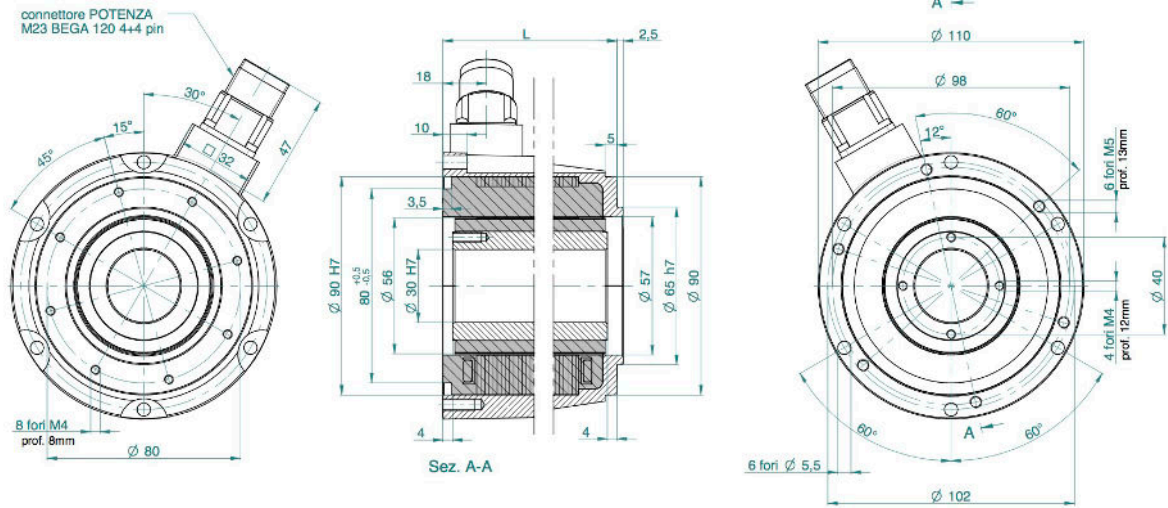


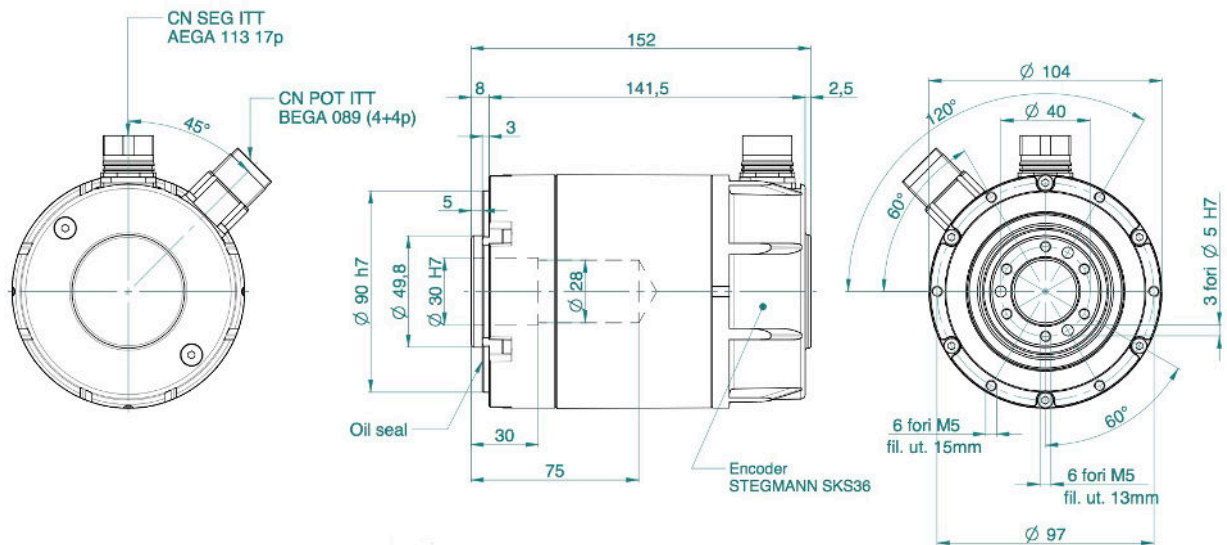
SKA DDR 090 DIMENSIONS AND CONFIGURATIONS

SKA DDR 090 FRAMELESS reference drawing 02



MOTOR TYPE	L (mm)
SKA DDR 090.30	60
SKA DDR 090.60	90
SKA DDR 090.90	120

SKA DDR 090.30 POWER PACK HOLLOW SHAFT reference drawing 03

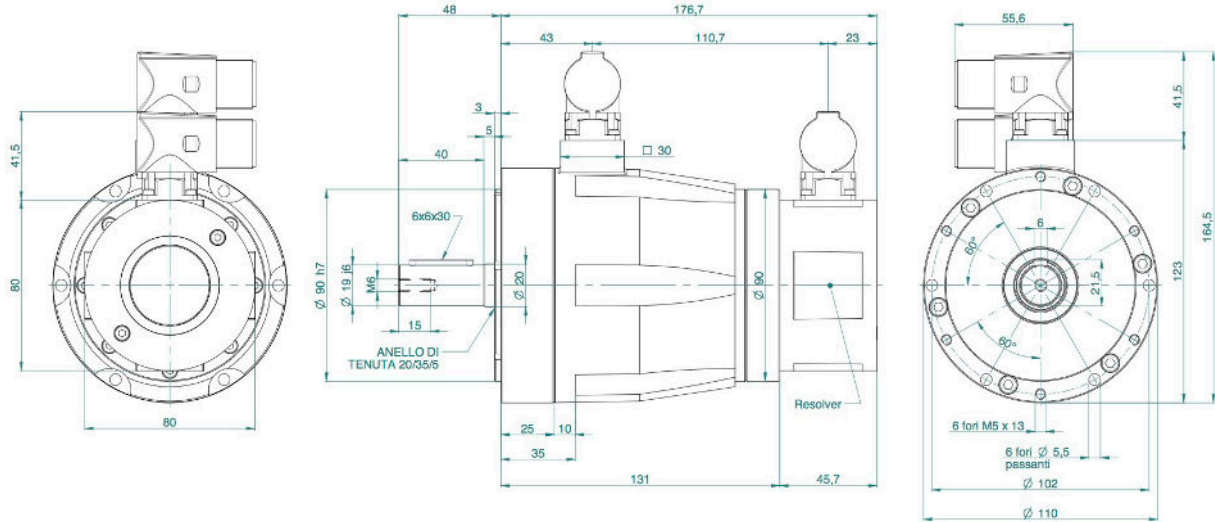


SEE IT BEFORE IT HAPPENS

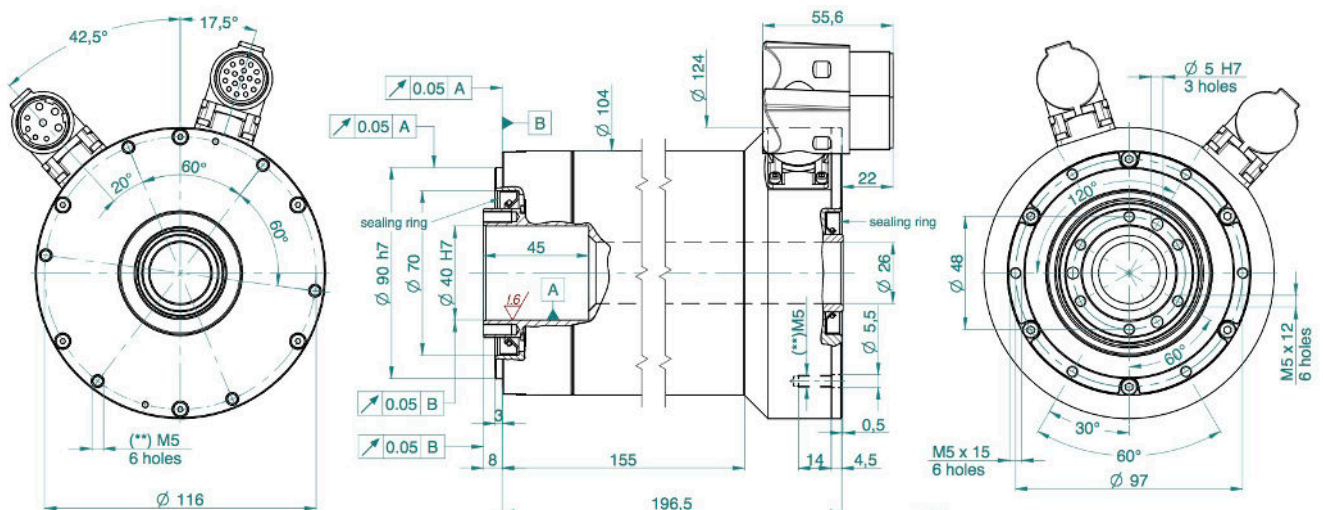
**MOTOR
POWER**
COMPANY

SKA DDR 090 DIMENSIONS AND CONFIGURATIONS

SKA DDR 090.60 POWER PACK MALE SHAFT reference drawing 04

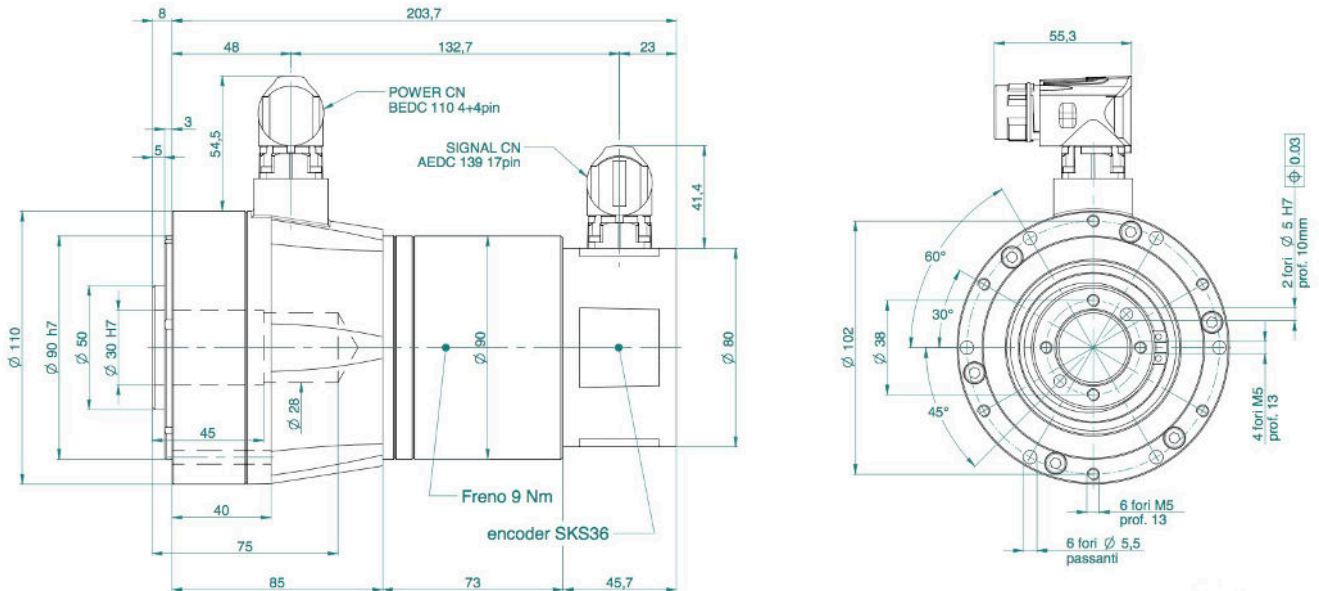


SKA DDR 090.90 POWER PACK THROUGH HOLLOW SHAFT reference drawing 05

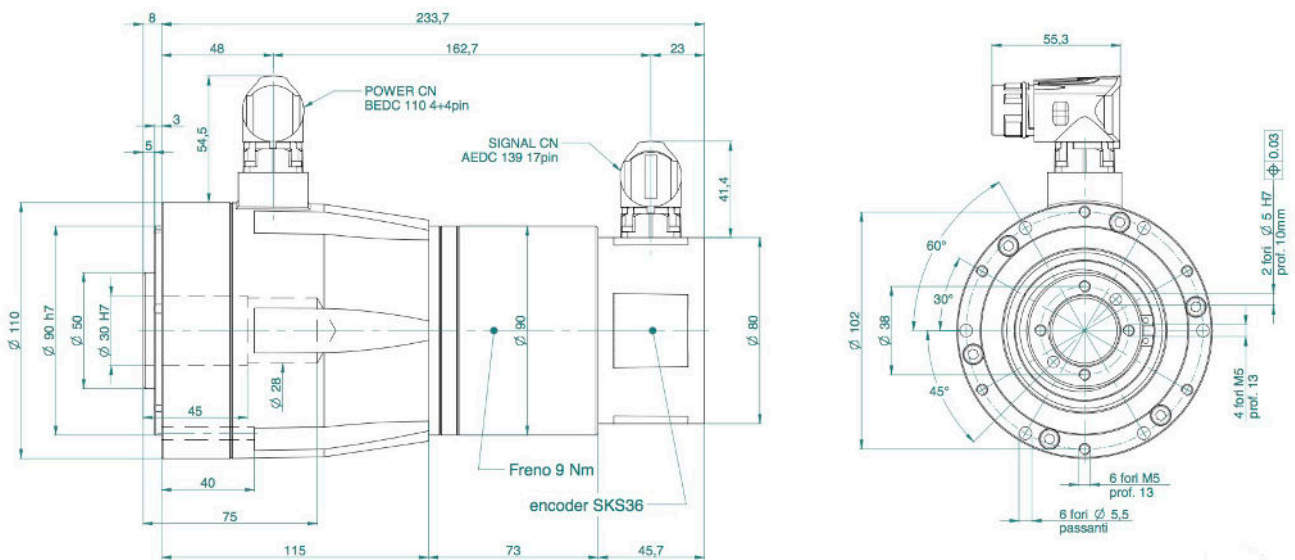


SKA DDR 090 DIMENSIONS AND CONFIGURATIONS

SKA DDR 090.30 POWER PACK HOLLOW SHAFT AND BRAKE reference drawing 06



SKA DDR 090.60 POWER PACK HOLLOW SHAFT AND BRAKE reference drawing 07



SEE IT BEFORE IT HAPPENS

**MOTOR
POWER**
COMPANY

SKA DDR 090 DIMENSIONS AND CONFIGURATIONS

SKA DDR 090.90 POWER PACK HOLLOW SHAFT AND BRAKE reference drawing 08

