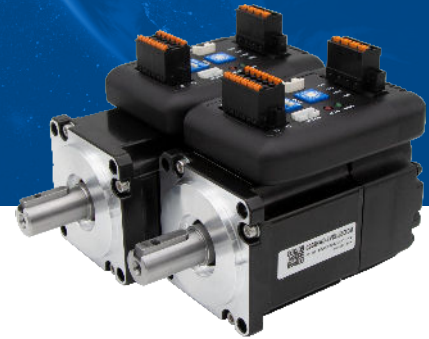


iSV2 Series Integrated Servo Motor

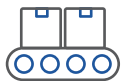
All-in-1 General Purpose



iSV2 series Product Introduction

iSV2 Series Integrated Servo Motor supports Modbus RTU and CANopen protocol (CiA301 & 402 standard protocol) in addition to pulse and directional control. Our integrated servo motor is aimed to save installation wiring work and application where mounting space is very limited.

iSV2 series is available with 200W, 400, 750W models of different flange sizes (60,80,57,86mm). Motor torque ranges from 0.64Nm up to 2.39Nm (Peak:7.2Nm) and torque overload of 250% to 300% for 3s. All comes with 17-bit magnetic encoder for more precise positioning control.



AGV



CNC Carving



3D printing



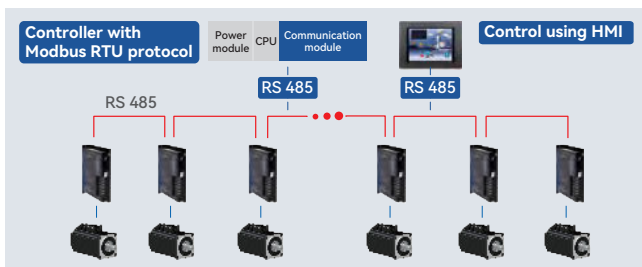
Robots



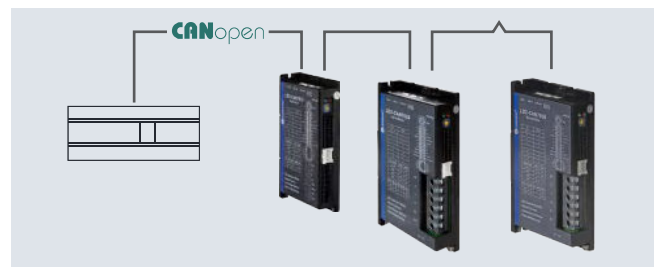
Medical

Integrated Servo Motor Features

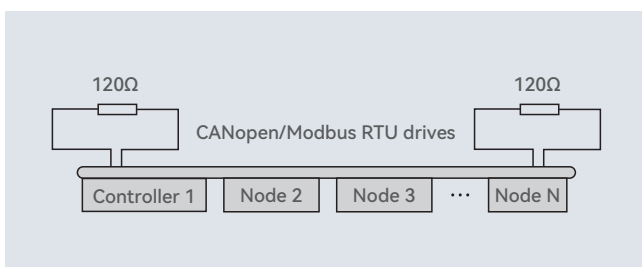
- Modbus RTU communication protocol with RS485 networking communication.



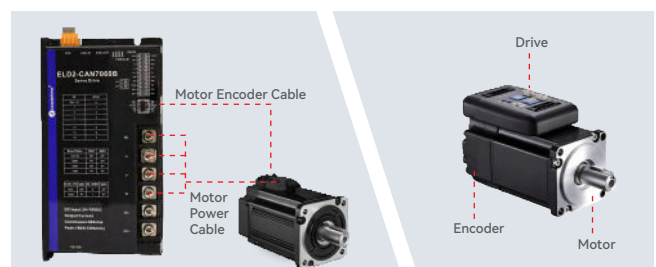
- CANopen communication protocol with PDO settings for easier drive setup and 402 observer for drive data monitoring and tuning.



- Integrated terminal resistor which can be adjusted using a switch on the drive.



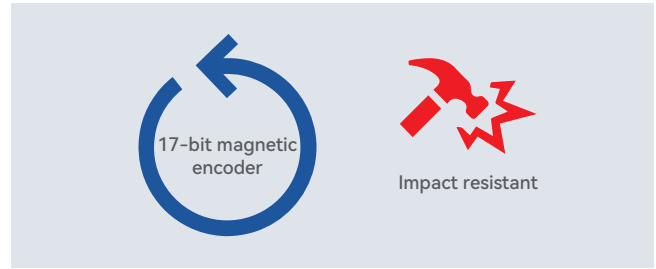
- Save installation space and installation wiring work.



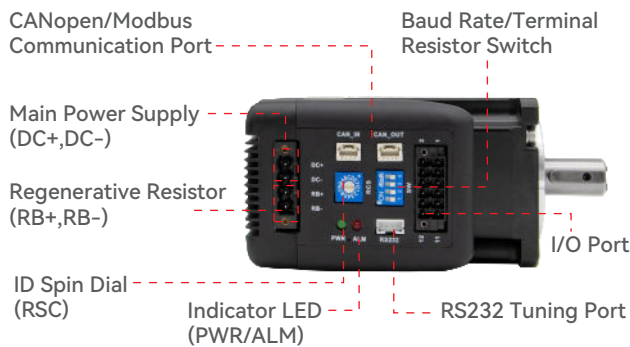
- Cooling vent on the back cover of the motor to ensure optimal continuous motor performance.



- 17-bit magnetic encoder for precise positioning and stable operation in harsher environment.



Ports & Connectors



iSV2 - CAN 60 40 V48 G

Motor Series		Motor Brake	
iSV2	iSV2 Series Integrated Servo Motor	H	Without Brake
		G	With Brake
Communication Protocol		Rated Voltage	
RS	Modbus RTU / Pulse+Direction	24	24VDC
CAN	CANopen	48	48VDC
Motor Flange Size		Rated Power	
57	57mm	20	200W
60	60mm	40	400W
80	80mm	75	750W
86	86mm		

Specifications

Motor	Flange size (mm)	Voltage (V)	Rated Power (W)	Current (Arms)		Torque (Nm)		Rotational speed (rpm)	
				Rated	Peak	Rated	Peak	Rated	Peak
iSV2-*6020V24	60	VDC24-60	200	11	34	0.64	1.92	3000	4000
iSV2-*6020V48				6.5	20				
iSV2-*6040V48				10	28				
iSV2-*8075V48	80		750	19	57	2.4	7.2		
iSV2-RS5740V48H	57		400	10	28	1.27	3.81		
iSV2-RS8675V48H	86		750	19	57	2.4	7.2		

Headquarters Leadshine Technology Co., Ltd.

- +86 755 26411692
- +86 755 26402718
- www.leadshine.com
- sales@leadshine.com (Sales)
- tech@leadshine.com (Technical Support)
- 15-20/F, Block B, Nanshan i-Valley, Shuguang Community, Xili Town, Nanshan District, Shenzhen 518055, China

North America Office Leadshine America, Inc.

- 1-949-608-7270
- 1-949-638-7298
- www.Leadshineusa.com
- sales@leadshineusa.com (Sales)
- tech@leadshineusa.com (Technical Support)
- 26050 Towne Centre Dr.Foothill Ranch, CA 92610 USA