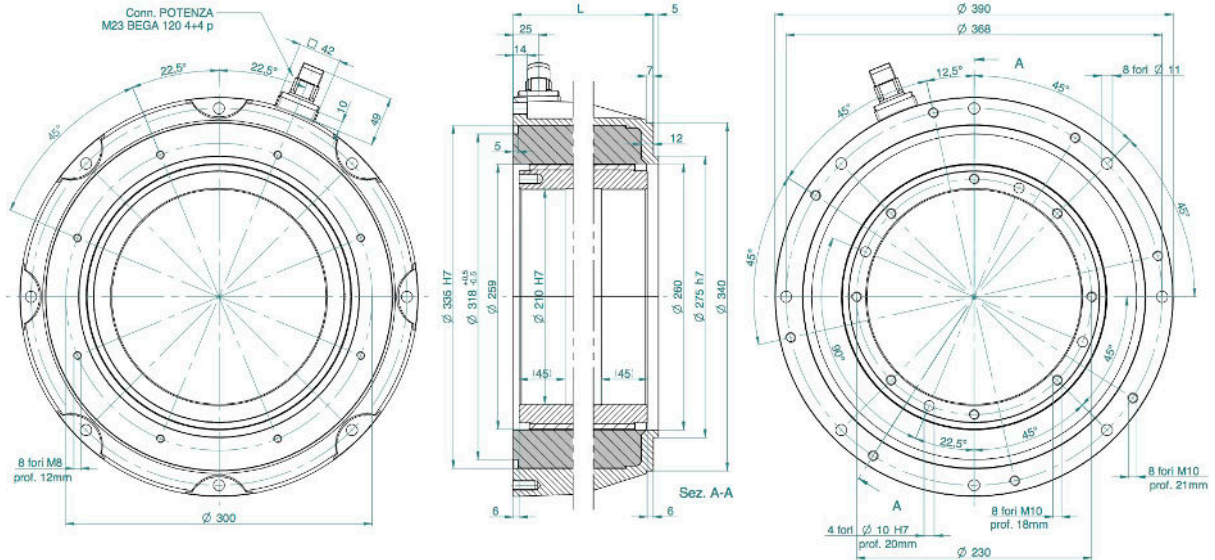


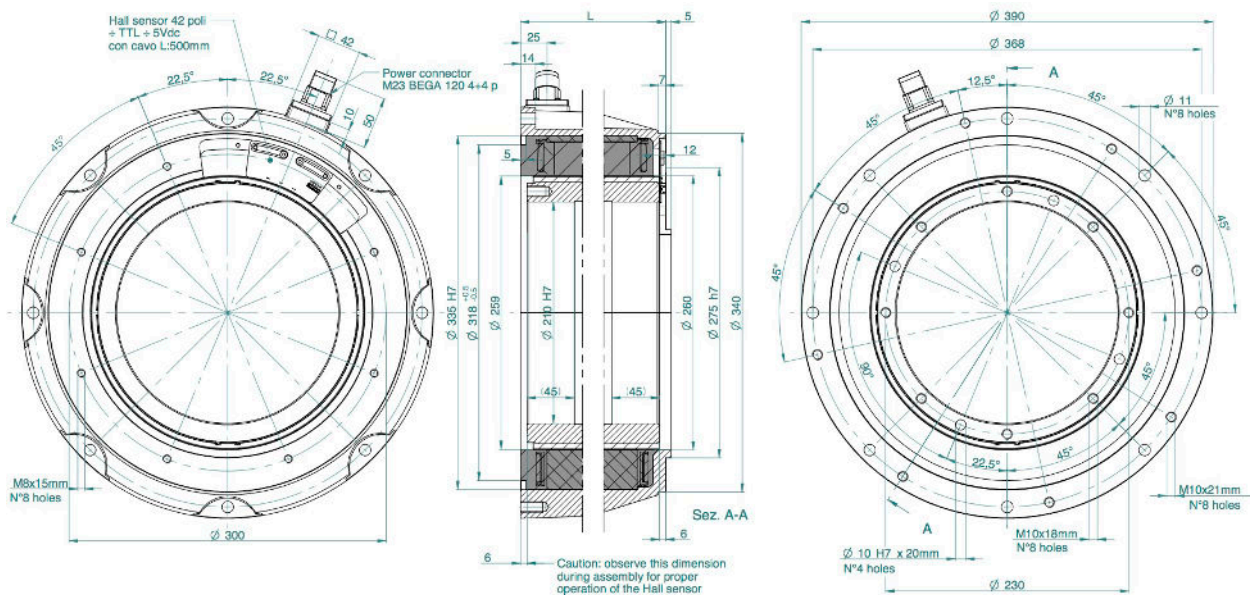
SKA DDR 335 DIMENSIONS AND CONFIGURATIONS

SKA DDR 335 FRAMELESS reference drawing 302



MOTOR TYPE	L (mm)
SKA DDR 335.30	82
SKA DDR 335.60	112
SKA DDR 335.90	142
SKA DDR 335.120	172
SKA DDR 335.150	202

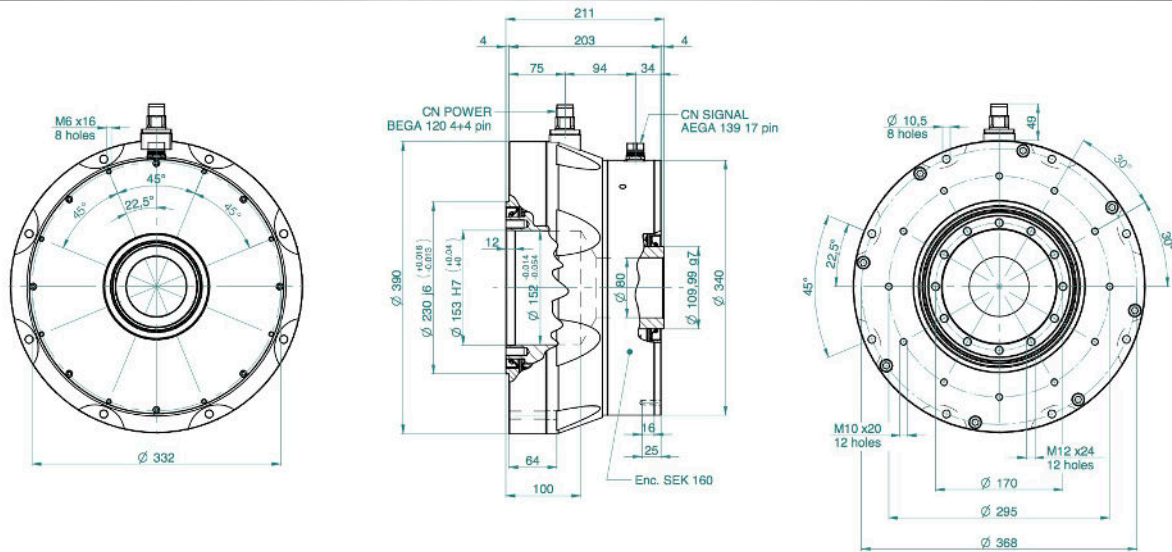
SKA DDR 335 FRAMELESS AND HALL SENSORS reference drawing 303



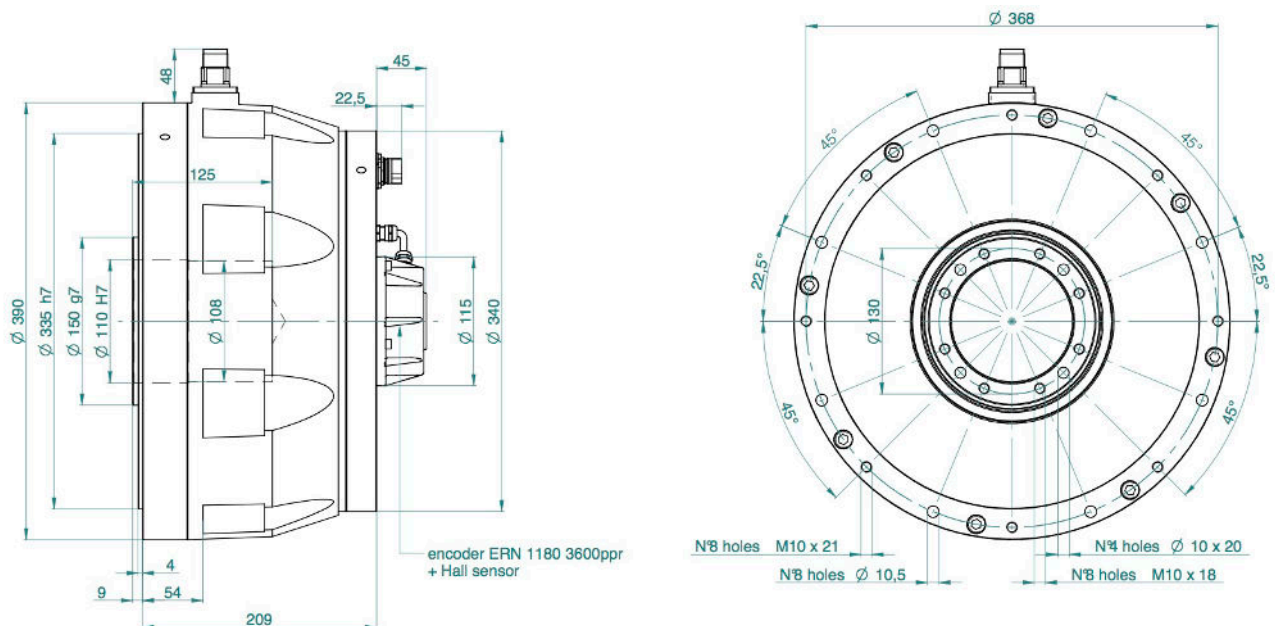
MOTOR TYPE	L (mm)
SKA DDR 335.30	82
SKA DDR 335.60	112
SKA DDR 335.90	142
SKA DDR 335.120	172
SKA DDR 335.150	202

SKA DDR 335 DIMENSIONS AND CONFIGURATIONS

SKA DDR 335 30 POWER PACK HOLLOW THOUGH SHAFT reference drawing 304

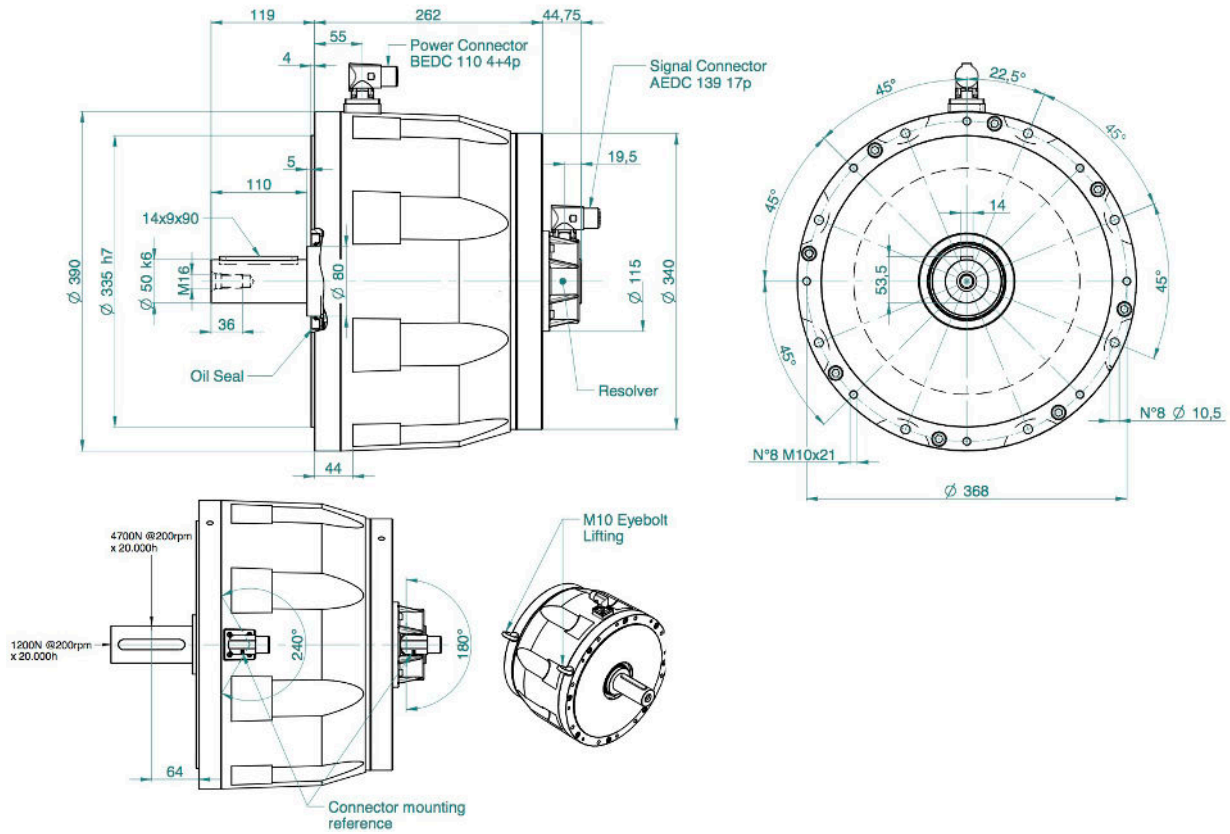


SKA DDR 335 90 POWER PACK HOLLOW SHAFT reference drawing 305

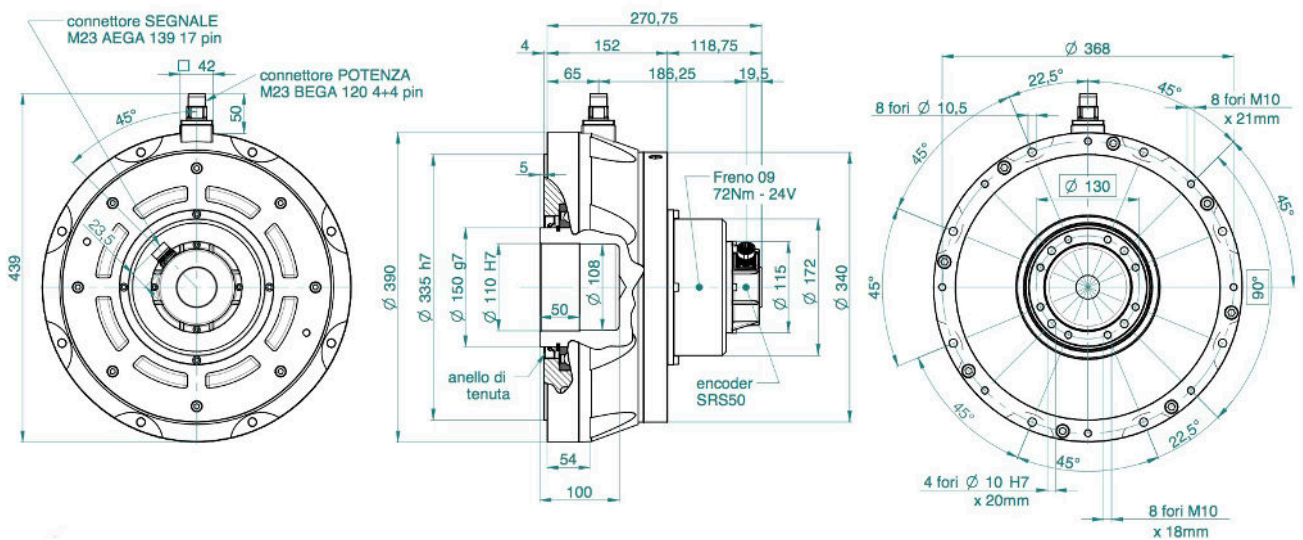


SKA DDR 335 DIMENSIONS AND CONFIGURATIONS

SKA DDR 335 150 POWER PACK MALE SHAFT reference drawing 306



SKA DDR 335 30 POWER PACK HOLLOW SHAFT AND BRAKE reference drawing 307



SEE IT BEFORE IT HAPPENS

**MOTOR
POWER**
COMPANY

SKA DDR 335 DIMENSIONS AND CONFIGURATIONS

SKA DDR 335 60 POWER PACK HOLLOW SHAFT AND BRAKE reference drawing 308

