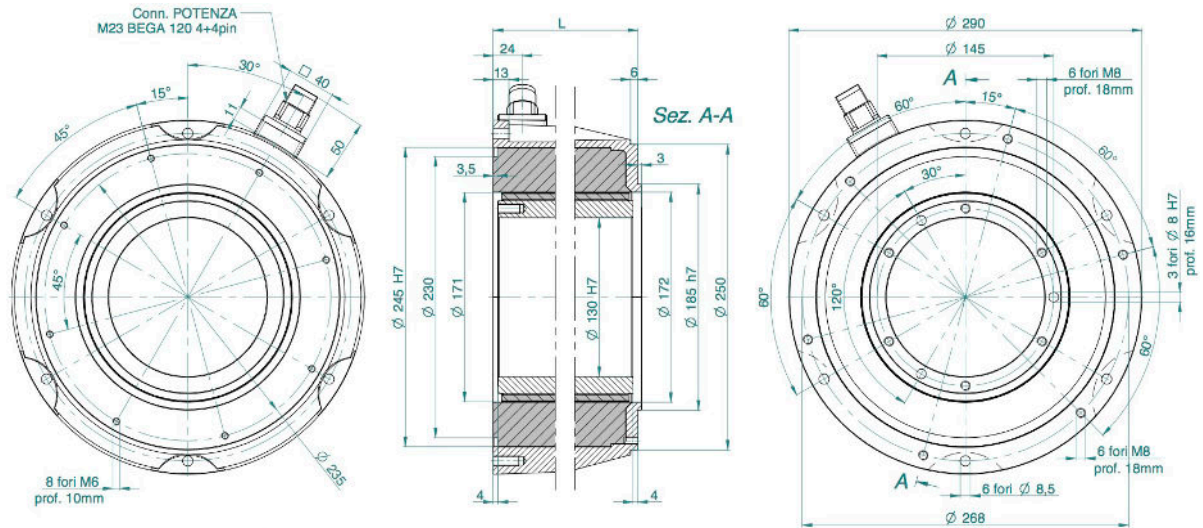


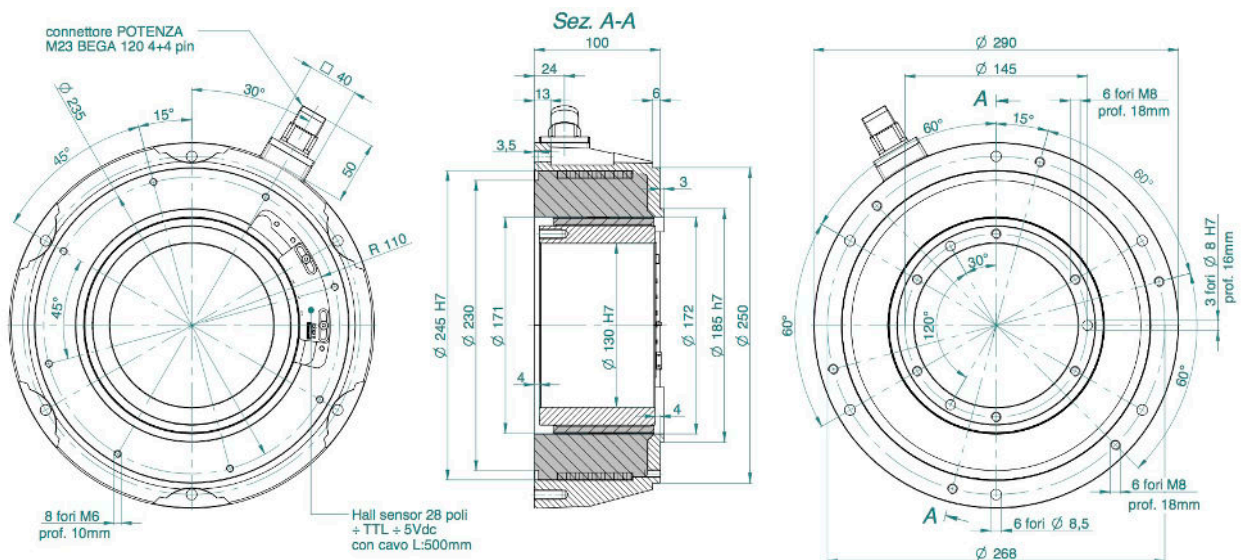
# SKA DDR 245 DIMENSIONS AND CONFIGURATIONS

## SKA DDR 245 FRAMELESS reference drawing 202



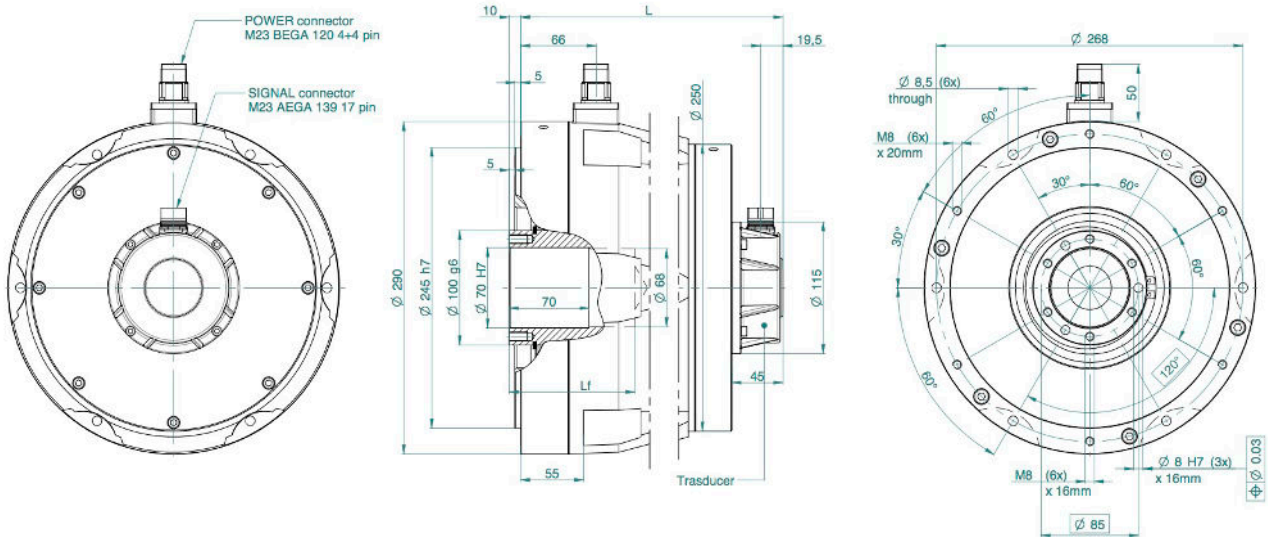
MOTOR TYPE	L (mm)
SKA DDR 245.30	70
SKA DDR 245.60	100
SKA DDR 245.90	130
SKA DDR 245.120	160

## SKA DDR 245 60 FRAMELESS AND HALL SENSORS reference drawing 203



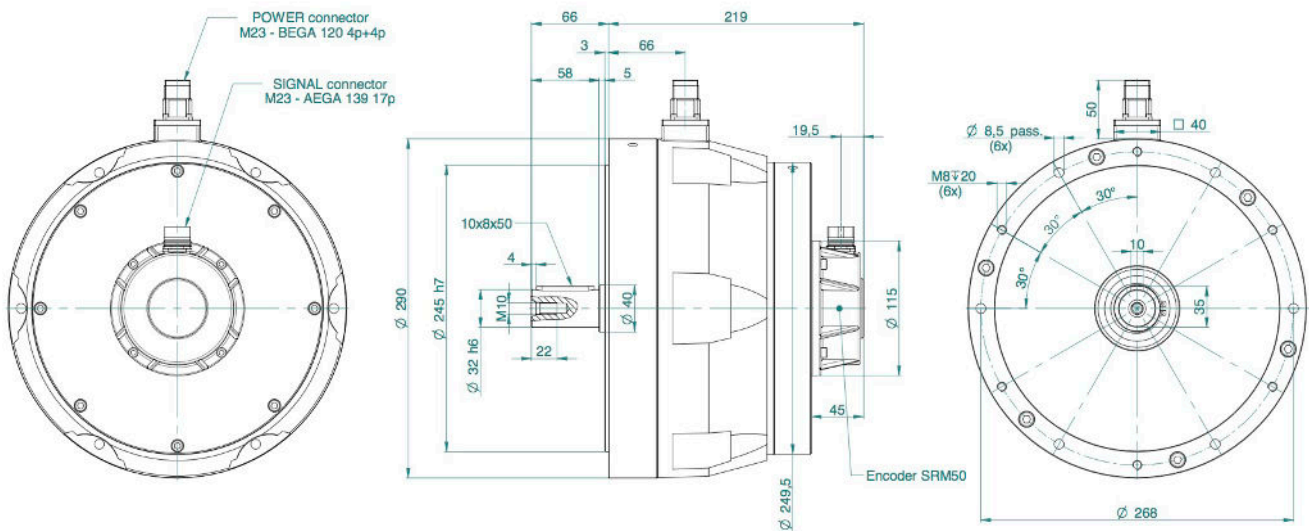
# SKA DDR 245 DIMENSIONS AND CONFIGURATIONS

## SKA DDR 245 POWER PACK HOLLOW SHAFT reference drawing 204



MOTOR TYPE	L (mm)	Lf (mm)
SKA DDR 245.30	189	80
SKA DDR 245.60	219	110
SKA DDR 245.90	249	140
SKA DDR 245.120	279	170

## SKA DDR 245 60 POWER PACK MALE SHAFT reference drawing 205



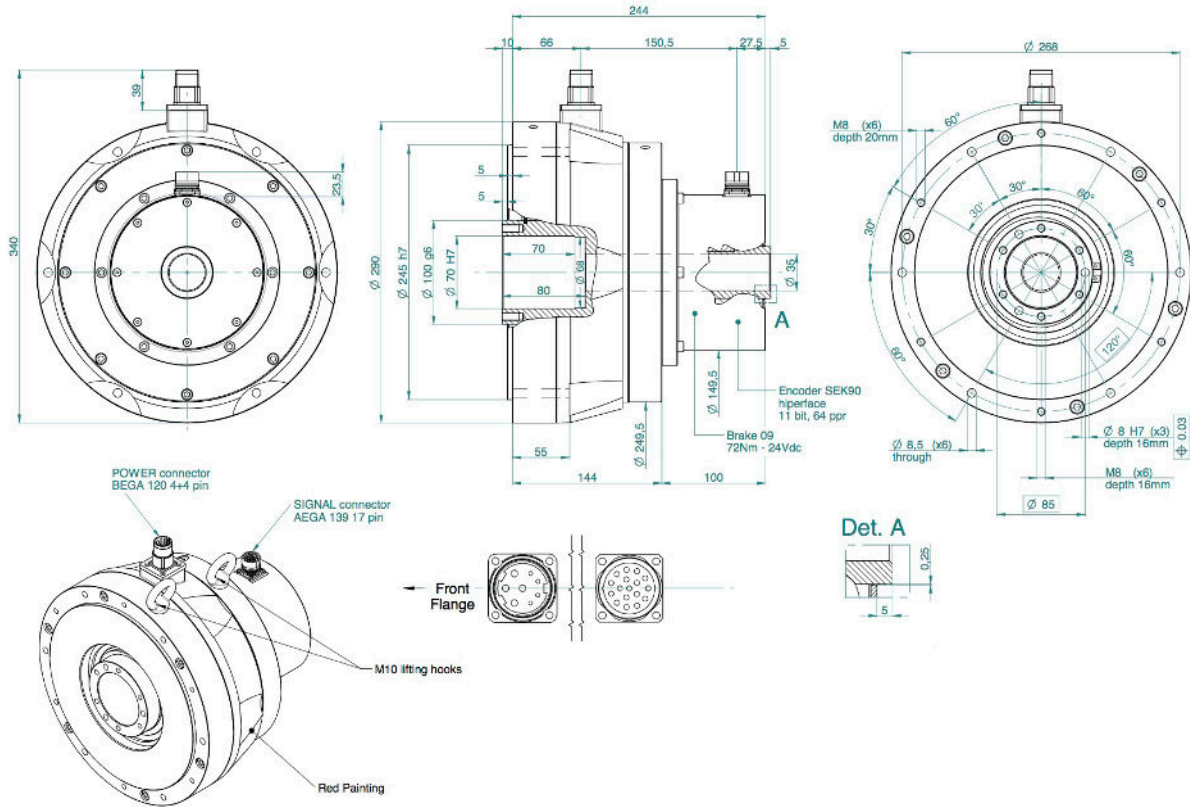
SEE IT BEFORE IT HAPPENS

**MOTOR  
POWER**  
COMPANY



# SKA DDR 245 DIMENSIONS AND CONFIGURATIONS

## SKA DDR 245 30 HOLLOW THROUGH SHAFT AND BRAKE reference drawing 206



## SKA DDR 245 120 POWER PACK HOLLOW SHAFT AND BRAKE reference drawing 207

