



INTELLIGENT MOTION SYSTEMS, INC.

Excellence in Motion™

H-462H HEAT SINK

FOR THE IB462He DRIVER



INTELLIGENT MOTION SYSTEMS, INC.

Excellence in Motion™

www.imshome.com

370 N. Main Street
P.O. Box 457
Marlborough, CT 06447 U.S.A.
Phone: 860/295-6102
Fax: 860/295-6107
E-mail: info@imshome.com

TECHNICAL SUPPORT

Phone: 860/295-6102 (U.S.A.)
Fax: 860/295-6107
E-mail: etech@imshome.com

Germany/UK

Phone: +49/7720/94138-0
Fax: +49/7720/94138-2
E-mail: mweber@imshome.com

IMS EUROPE GmbH ISO9000

Hahnstrasse 10, VS-Schwenningen
Germany D-78054
Phone: +49/7720/94138-0
Fax: +49/7720/94138-2
E-mail: info@imseuropehome.com

European Sales Management

4 Quai Des Etroits
69005 Lyon, France
Phone: +33/4 7256 5113
Fax: +33/4 7838 1537
E-mail: bmartinez@imshome.com

Germany Sales

Phone: +49/35205/4587-8
Fax: +49/35205/4587-9
E-mail: hruhland@imshome.com

Germany/UK Technical Support

Phone: +49/7720/94138-0
Fax: +49/7720/94138-2
E-mail: mweber@imshome.com

IMS MOTORS DIVISION

105 Copperwood Way, Suite H
Oceanside, CA 92054
Phone: 760/966-3162
Fax: 760/966-3165
E-mail: motors@imshome.com

U.S.A. SALES OFFICES

Eastern Region

Phone: 862/208-9742
Fax: 973/661-1275
E-mail: jroake@imshome.com

Central Region

Phone: 260/402-6016
Fax: 419/858-0375
E-mail: dwaksman@imshome.com

Western Region

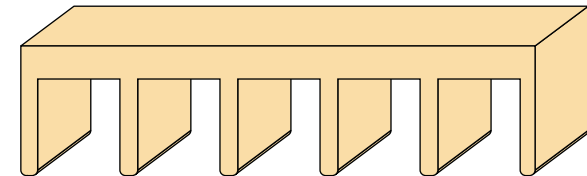
Phone: 408/472-1971
Fax: 408/268-0716
E-mail: mwietharn@imshome.com

ASIA PACIFIC OFFICE

30 Raffles Pl., 23-00 Caltex House
Singapore 048622
Phone: +65/6233/6846
Fax: +65/6233/5044
E-mail: wlee@imshome.com

IMS UK Ltd

25 Barnes Wallis Road
Segensworth East
Fareham, Hampshire, UK PO155TT
Phone: +44/1489/889-825
Fax: +44/1489/889/857
E-mail: mcheckley@imshome.com



INSTALLATION GUIDE

370 N. MAIN ST., PO BOX 457, MARLBOROUGH, CT 06447
PH. (860) 295-6102, FAX (860) 295-6107, E-mail: info@imshome.com

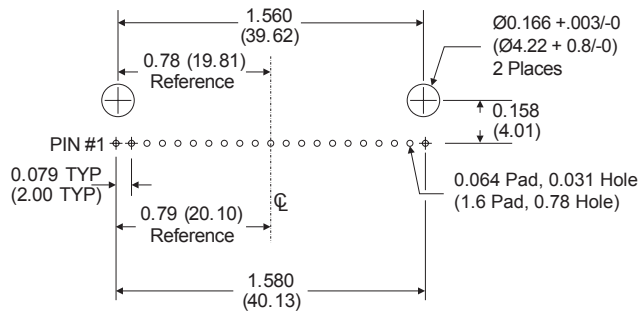
www.imshome.com

Notes and Warnings

The IB462He Bipolar Stepping Motor Driver rear plate MUST be kept at 70°C or below at ALL operating power levels or damage may result to the device. The H-462H Heat Sink is designed to be used with the IB462He Driver. The use of the H-462H Heat Sink and the included TI-462H Isolating Thermal Pad is required to maintain proper rear plate temperature.

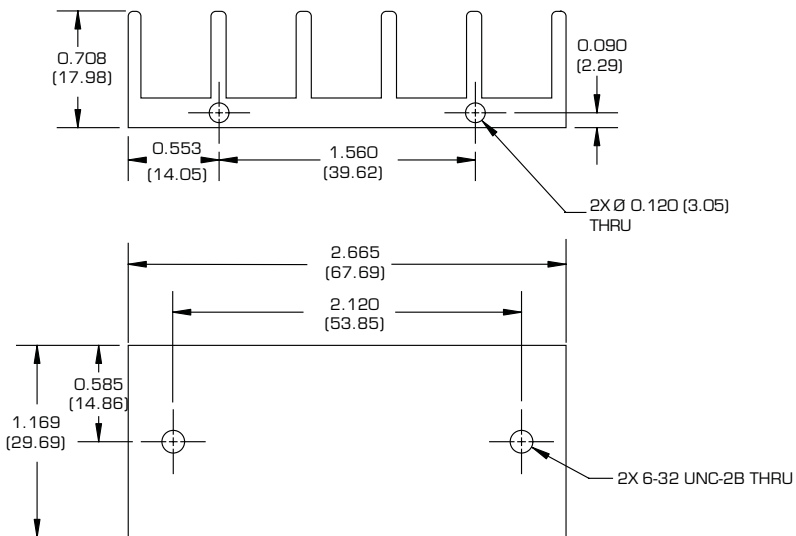
WARNING! The mounting surface of the Heat Sink must be a smooth, flat surface with no burrs, protrusions, cuttings, or other foreign objects.

PCB Hole Pattern



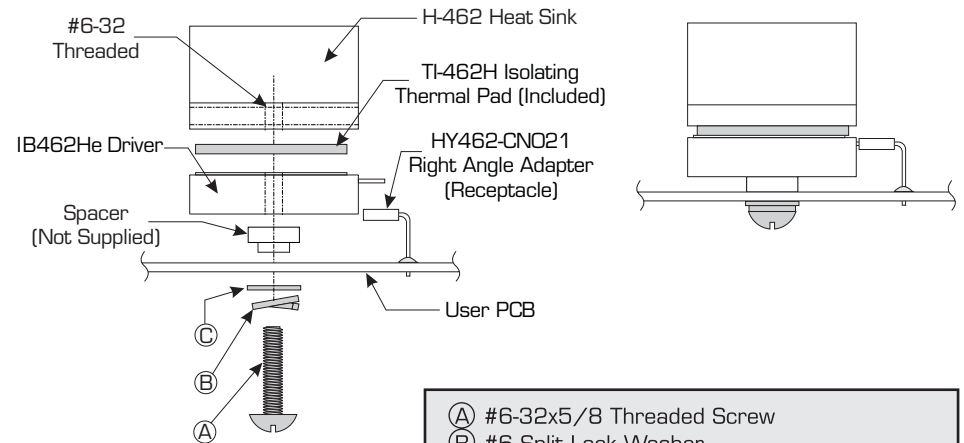
Mechanical Dimensions

Dimensions in Inches (mm)



PCB Mounting Using a Receptacle

The IB462He Driver can be mounted to a PC Board utilizing a receptacle and then mounted to the H-462H Heat Sink with the TI-462H Isolating Thermal Pad.



- (A) #6-32x5/8 Threaded Screw
- (B) #6 Split Lock Washer
- (C) #6 Flat Lock Washer
- (D) #4-40x1 3/8 Threaded Screw
- (E) #4 Split Lock Washer

N The torque specification for the #6 mounting screw is 5.0 to 7.0 lb-in (0.60 to 0.80 N-m)

Direct PCB Mounting

The IB462He Driver is designed to be soldered directly to a PC Board. The H-462H Heat Sink with the TI-462H Isolating Thermal Pad are mounted as shown below.

