

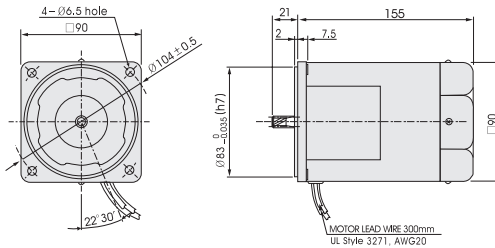
INDUCTION MOTORS

180W □90mm

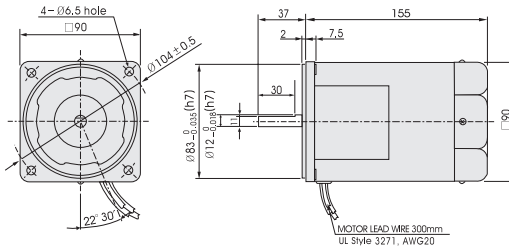
LEAD WIRE TYPE

DIMENSIONS

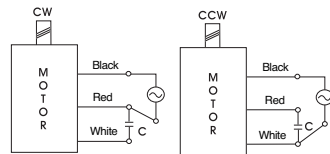
K9IP180F□



K9IS180F□



CONNECTION DIAGRAMS



The direction of motor rotation is as viewed from the front shaft end of the motor

SPECIFICATIONS

continuous rating, four poles class E or A

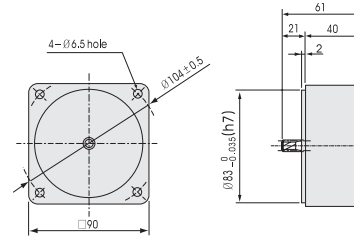
Model	Output (W)	Voltage (V)	Frequency (Hz)	Current (A)	Starting Torque (N·m) (kgfcm)	Rated Torque (N·m) (kgfcm)	Speed (rpm)	Condenser (μF)
K9IP180FU K9IP180FU	single-phase 180	110	60	2.8	0.7	1.12	1600	35
		115			7.0	11.2		
K9IP180FC K9IS180FC	single-phase 180	220	60	1.4	0.7	1.12	1600	8
					7.0	11.2		

GEARHEADS

DIMENSIONS

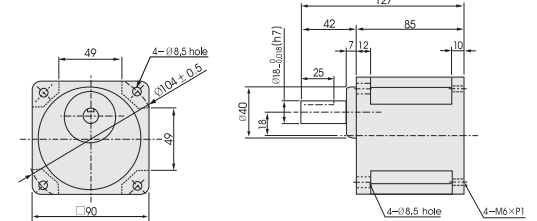
DECIMAL GEARHEAD

K9P10BX



GEARHEAD

K9P□BU

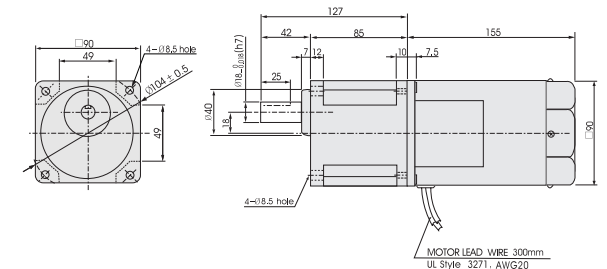


DIMENSION TABLE

PART No.	L	APPLICATION MODEL	MOUNTING BOLT
01	65	K9P3~180BU	M6 P1.0×20
02	40	K9P10BX	M6 P1.0×20



K9IP180F□ + K9P□BU



RATED TORQUE OF GEARHEAD

● 60Hz

unit: above : N·m / below : kgfcm

Model Motor/ Gearhead	Speed(rpm) Ratio	600	500	360	300	240	200	144	120	100	72	60	50	36	30	24	20	18	15	12	10
		3	3.6	5	6	7.5	9	12.5	15	18	25	30	36	50	60	75	90	100	120	150	180
K9IP180F□ K9P□BU	2.72	3.27	4.54	5.44	6.80	8.16	10.21	12.25	14.70	18.37	22.04	26.45	30	30	30	30	30	30	30	30	30
	27.2	32.7	45.4	54.4	68.0	81.6	102.1	122.5	147.0	183.7	220.4	264.5	300	300	300	300	300	300	300	300	300

\* Gearhead and decimal gearhead are sold separately.

\* The code in □ of gearhead model is for gear ratio.

\* color indicates that the output shaft of the geared motor rotates in the same direction as the output shaft of the motor. Others indicate rotation in the opposite direction.

\* If you are to have less ratio than the ratio in the table, you can install the decimal gearhead, which has one tenth of the ratio, between the gearhead and the motor. In this case, the permissible torque is 30N·m/300kgfcm.