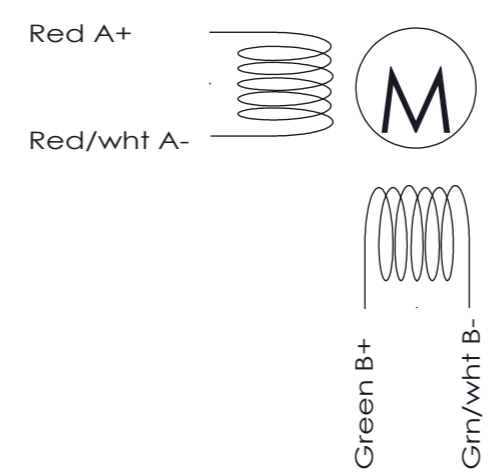
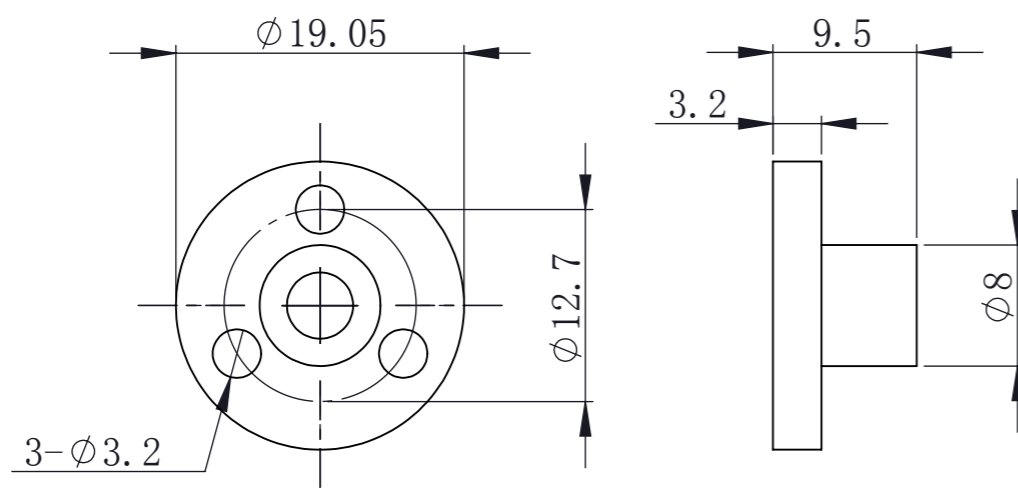
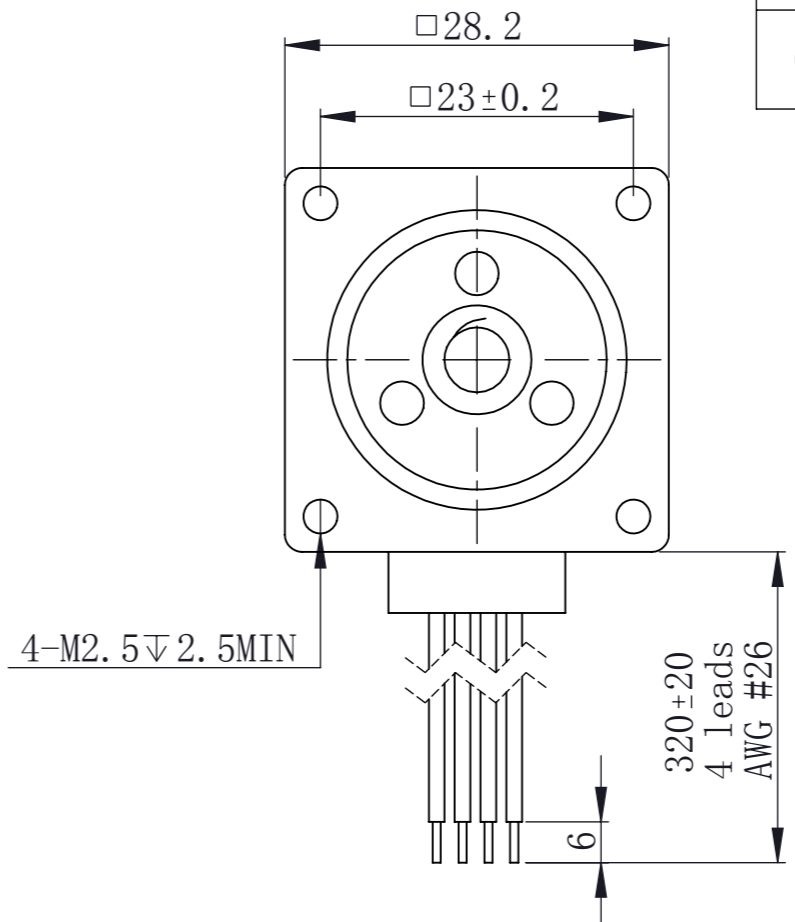
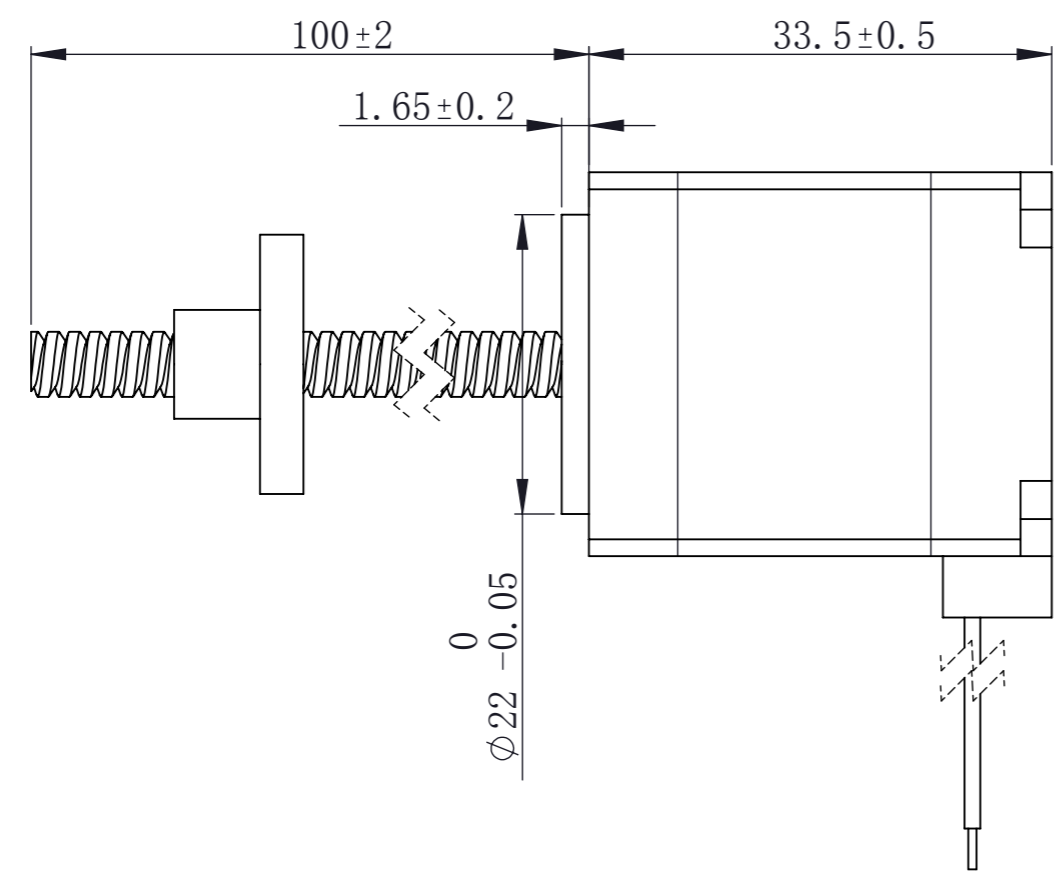


REVISIONS		
REV.	DATE	DESCRIPTION
00	2010/07/06	RELEASE
01	2014/05/29	the wries color: red, red/wht, green, green/wht was black, green, red, blue



Label Detail  
 11E2034A4-050-001  
 DINGS' MOTION  
 Work order  
 Date Code Rev XX

Winding excited sequence 电机通电运转				
CW 正转	→			
A+	+		-	
A-	-		+	
B+		-		+
B-		+		-
CCW 反转	←			

技术参数 Parameter

Rated current/phase 额定相电流	0.5 A	Motor phase 电机相数	2
Resistance/phase 相电阻	9.1 ±10%Ω	Step angle 步距角	1.8 DEG
Rated voltage 额定电压	4.5 V	Lead screw diameter 螺杆外径	Φ4.7752 mm
Insulation resistance 绝缘电阻	100MΩ (500VDC)	Lead screw lead 螺杆导程	0.635 mm
Insulation class 绝缘等级	B	Linear travel per step 步长	0.003175mm/step
Heat rise 温升	80°C	Others 其他	
Motor weight 电机重量	0.18 kg		

客户 Customer		技术规格书 Specification	
<b>KOCO MOTION</b>			
UNLESS OTHERWISE SPECIFIED: 其余未注事项: DIMENSIONS ARE IN MILLIMETERS 尺寸单位为毫米 (mm). TOLERANCES AS BELOW: 未注公差按以下标准:			
ANGLE ±1°	角度 ±1°	DRAWN 设计	何超 2014/05/29
英寸 inch	毫米 mm	MFG'D 工艺	
.X ±0.04	X. ±1	Checkd 审核	
.XX ±0.01	.X ±0.25	QA 质量	
.XXX ±0.005	.XX ±0.13	APPVD 批准	
.XXXX ±0.0005	.XXX ±0.013		

<b>常州市鼎智机电有限公司</b> DINGS' MOTION	
TITLE: 线性步进电机 Linear Actuator	
DWG NO.	11E2034A4-050-001
SCALE: 1:1	SHEET 1 OF 1

A3