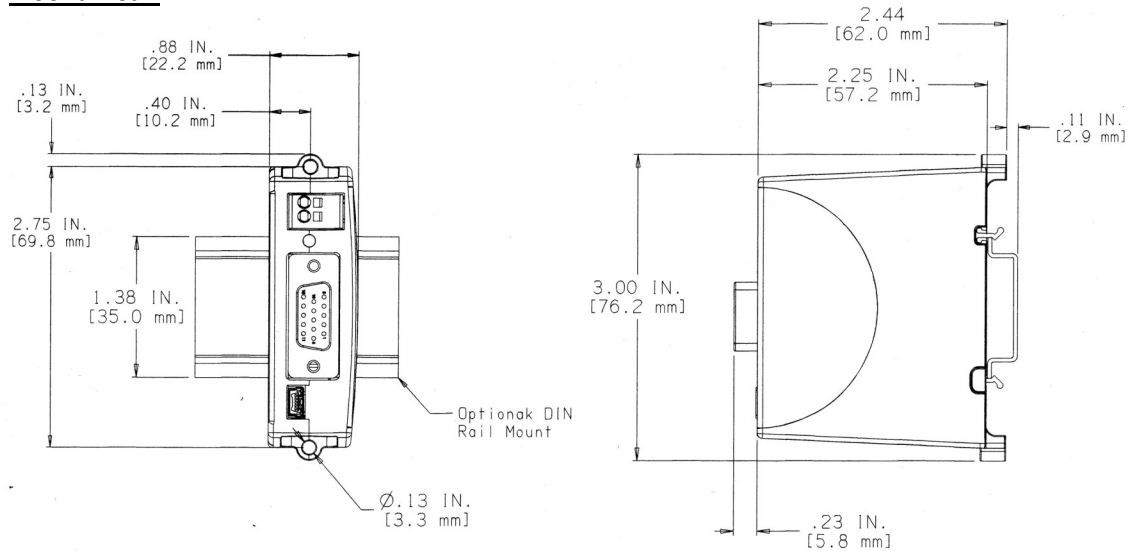




## Mechanical:



## Connections:

**Power :** +5vdc to +24vdc +/- 5%

Current — 251mA @ 5vdc, 52mA @24vdc

Connector type – 2 Position, spring clamp terminal block

**Communication:** USB Version 2.0

Connector Type – Micro USB

**Signal:** Encoder power (+5vdc – current limited to 50mA)

Encoder A+ } Encoder may be single ended or differential  
Encoder A- }  
Encoder B+ }  
Encoder B- }

Encoder Ground

Step Clock in } Includes clock up/clock down and quadrature input modes  
Direction in }

Stop/go (in velocity and torque mode), Bypass (in clock and direction mode)

Locked rotor—output

Interrupt—output

Step clock out (20mA drive capability) } Includes clock up/clock down and quadrature output modes  
Direction out (20mA drive capability) }

Motor Current reference (for variable current control)

Motor Current reference ground

Connector Type – Compact Female 15 pin D type

## Illumination:

**LED:** 3 color — Green- Power on & everything is OK

Yellow- Correction active

Red- Continuous: locked rotor, Blinking: fault

## Mounting:

35mm DIN Rail or Panel mountable

## Ordering Information:

**ServoTrack Part #:** STU-01

**Breakout Board Part #:** BBST1

## Optional Breakout Board: