

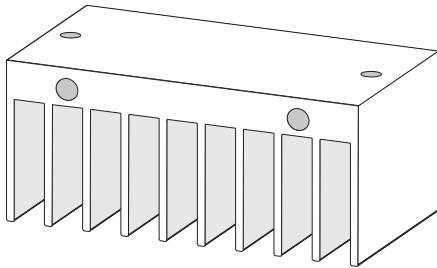


INTELLIGENT MOTION SYSTEMS, INC.
Excellence in Motion™

H-481 Heat Sink

HEAT SINK for IM481H Plus DRIVER
 and INT-481 INTERFACE BOARD

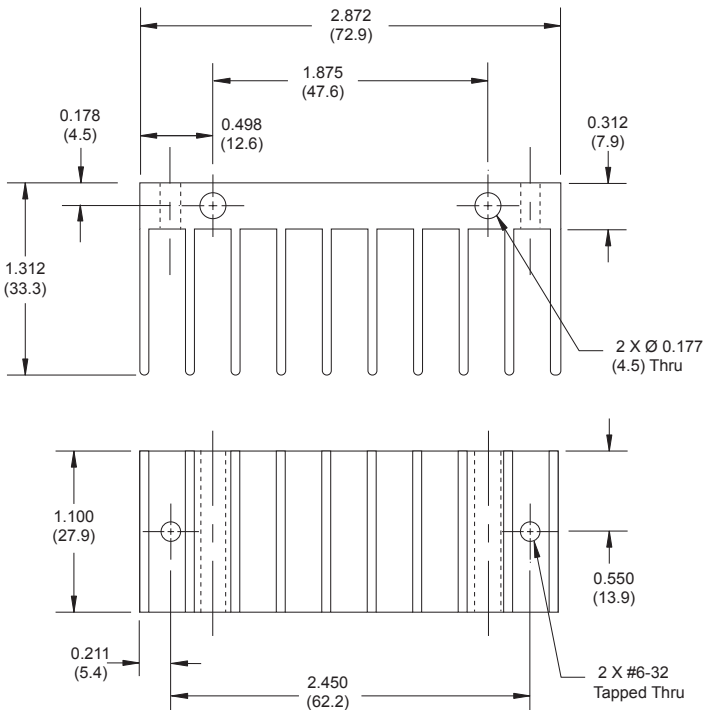
QUICK REFERENCE



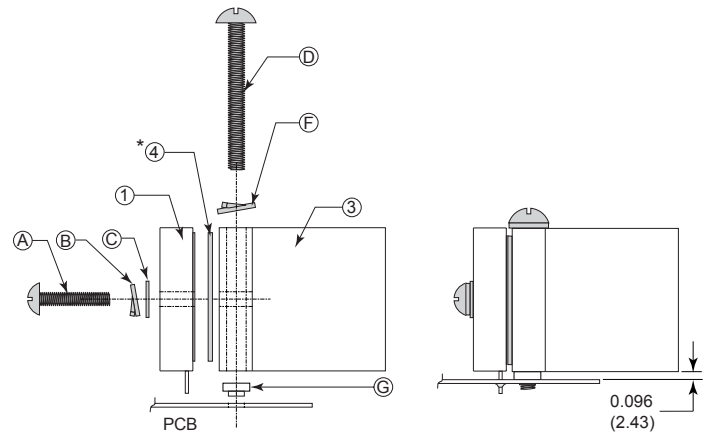
370 N. MAIN ST., PO BOX 457, MARLBOROUGH, CT 06447
 PH: (860) 295-6102, FAX: (860) 295-6107
 Internet: www.imshome.com, E-Mail: info@imshome.com

H-481 Mechanical Dimensions

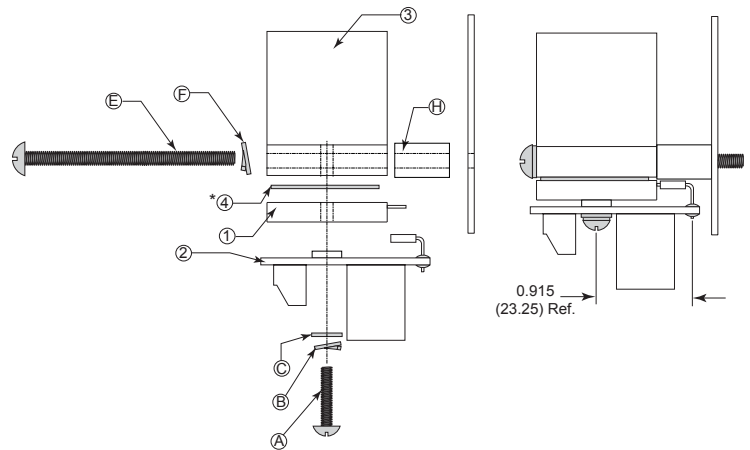
Dimensions in Inches (mm)



H-481 Direct PCB Mounted with IM481H PLUS



H-481 Panel Mounted with IM481H PLUS & INT-481



* The Isolating Thermal Pad (TI-481) item #4 is supplied with the Interface Board (INT-481). If the INT-481 is not used, the TI-481 must be ordered separately.

Product/Item #	Description	Qty.
1	IM481H PLUS Microstepping Driver	1
2	INT-481 Interface Board	1
3	H-481 Heat Sink	1
4	TI-481 Isolating Thermal Pad	1
A	#6-32x5/8" Pan Head Screw	2
B	#6 Split Lock Washer	2
C	#6 Flat Washer, 0.250" OD, 0.145" ID, 0.030" Thick	2
D	#8-32x13/8" Pan Head Screw	2
E	#8-32x2 Pan Head Screw	2
F	#8 Split Lock Washer	2
G	#8-32 Internally Threaded Broaching Nut	2
H	Spacer, 0.312" OD, 0.171" ID, 0.500" Long	2

NOTE

- The Heat Sink mounting surface must be a smooth surface with no burrs, protrusions, cuttings or other foreign objects.
- The torque specification for the #6-32 INT-481 and IM481H PLUS mounting screw is 5.0 - 7.0 in-lbs.